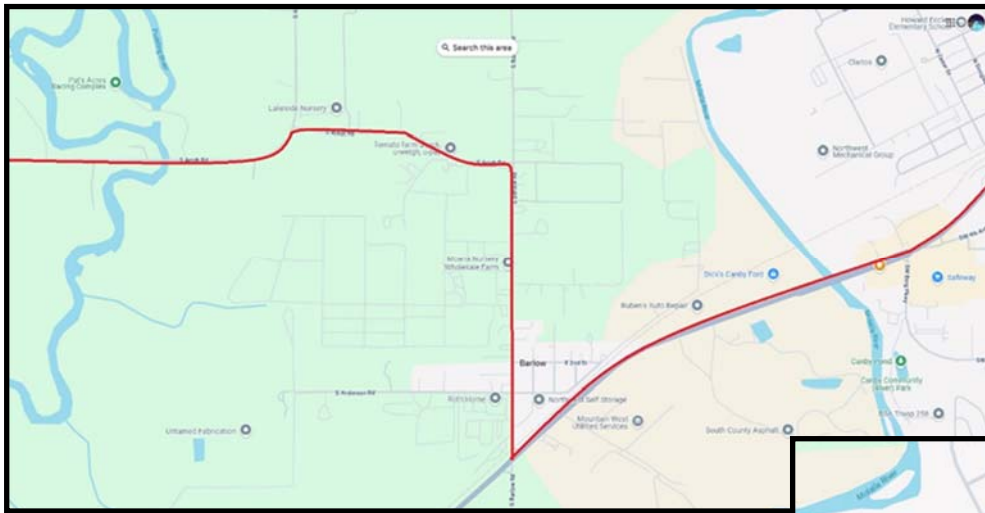


3X DETOUR

June 16-October 14, 2025

Due to Construction on Knights Bridge



Detouring using Barlow Rd to 99E, to Elm, to continue regular route (both directions)

Closed Bus Stops:

- ♦ Knights Bridge Rd @ Aspen St
- ♦ Cedar St @ Knights Bridge Rd
- ♦ Cedar St @ 6th Ave
- ♦ Eccles Elementary School
- ♦ Cedar St @ 3rd Ave
- ♦ Cedar @ 2nd Ave
- ♦ 2nd Ave @ Elm St (To Canby Only)

