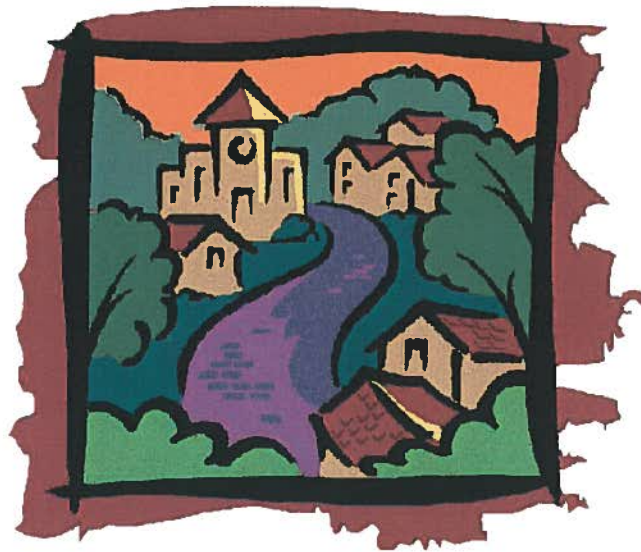


# VILLEBOIS

## SPECIFIC AREA PLAN – EAST

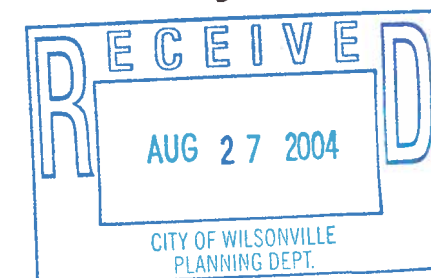
### Vol. IV: COMMUNITY ELEMENTS BOOK



# villebois



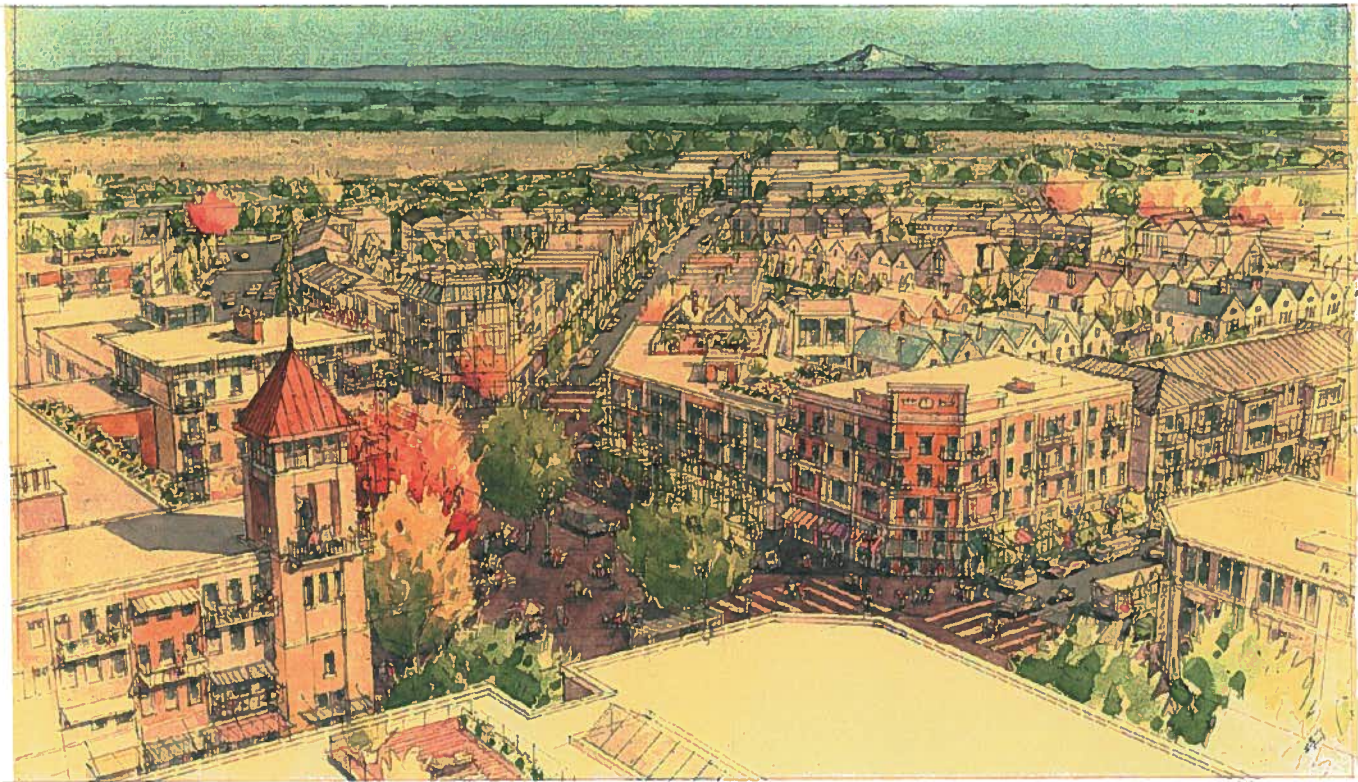
1/24/05



**Matrix Development Corporation**  
**Western Planning Associates**  
Landscape Architects & Planners  
**Iverson Associates**  
Architecture  
**Alpha Engineering, Inc.**  
Civil Engineers and Planners  
**Walter Knapp**  
Tree and Landscape Consulting

**FILE COPY**

August 27th, 2004



This Community Elements Book is a key component in the development of Villebois. This plan identifies plants, street trees, tree protection, lighting, curb extensions, play structures and site furnishings to be used throughout the community. These are important contributing elements that will establish a coherent identity for the community while meeting Villebois’ goals for connectivity, diversity and sustainability.

Contents

INTRODUCTION & TABLE OF CONTENTS ..... 2

LIGHTING MASTER PLAN SPECIFICATIONS ..... 3

LIGHTING MASTER PLAN DIAGRAM..... 5

CURB EXTENSION CONCEPT PLAN DIAGRAM ..... 6

CURB EXTENSION DIAGRAMS ..... 7

STREET TREE MASTER PLAN DIAGRAM..... 8

STREET TREE MASTER PLAN LIST ..... 9

SITE FURNISHINGS – BENCHES ..... 12

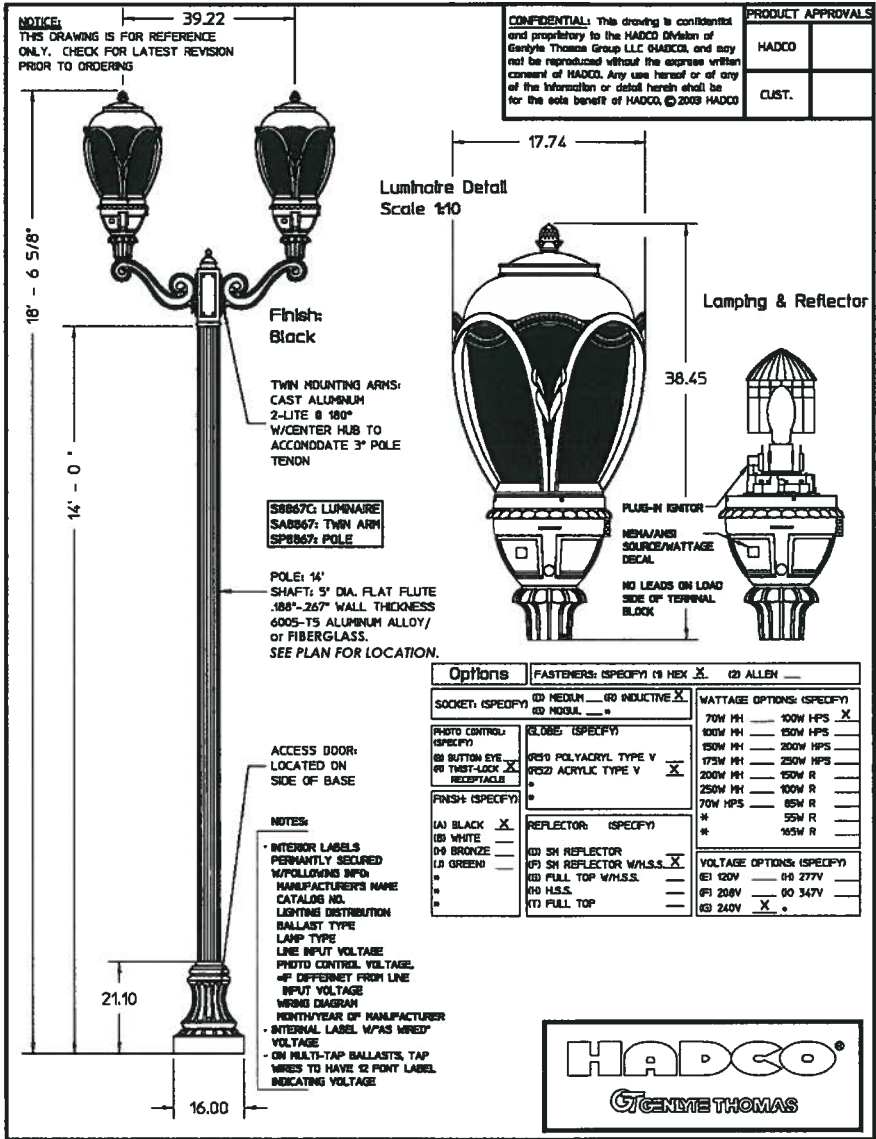
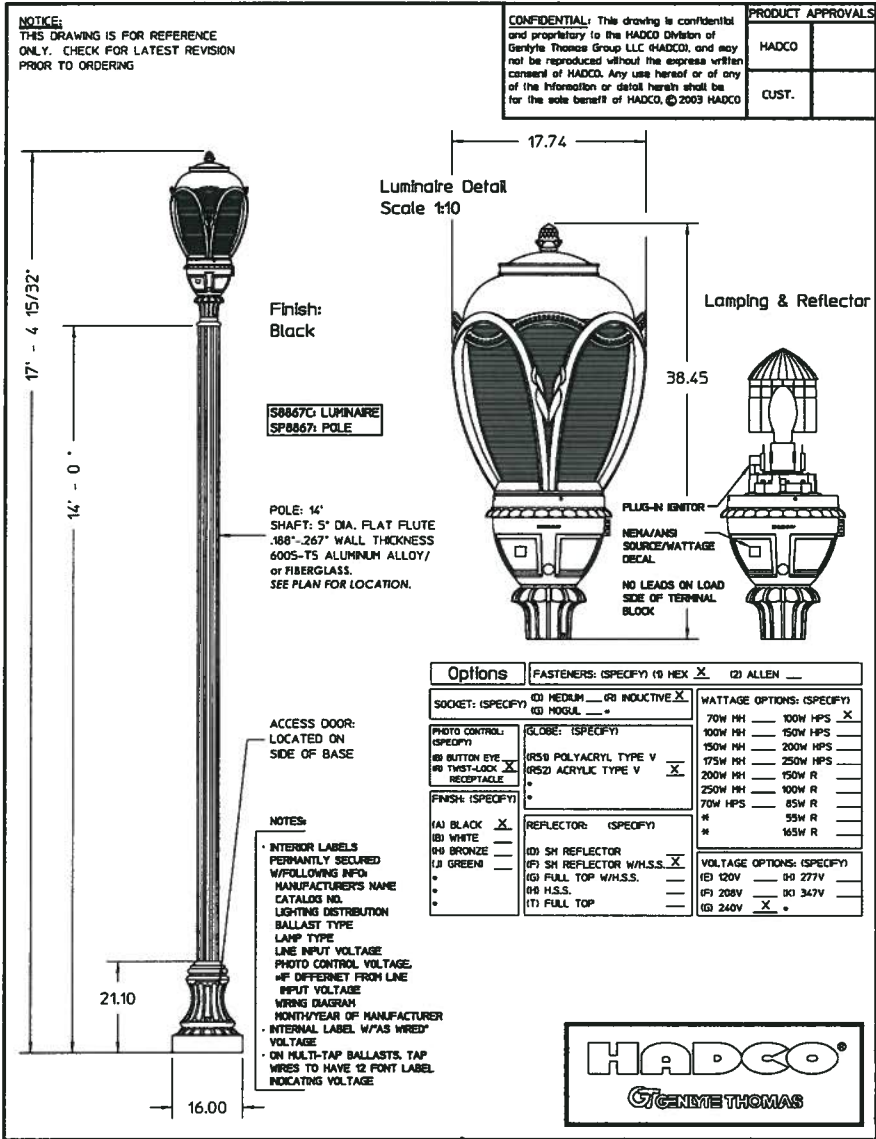
SITE FURNISHINGS – MISC ..... 13

PLAY STRUCTURES ..... 15

TREE PROTECTION ..... 16

PLANT LIST..... 17





Substitutions to the above light fixtures must be an approved equal as determined by the Master Planner and pre-approved by PGE.

LIGHTING MASTER PLAN CONCEPT

The Lighting Concept for Villebois is an important element of the community's plan. Lighting is often overlooked in the myriad details of construction and design, but when considered carefully, good lighting can contribute to a coherent identity for a community while meeting traditional goals of safety and wayfinding.

**Connectivity:** The Lighting Concept is intended to provide clear connections throughout Villebois. These connections will occur on primary streets, intersections, and the greenway. The light fixtures, including Luminaire, Pole, and Base will be the same on the major community streets providing a sense of unity and connectivity.

**Diversity:** Light levels will vary based on the location. Variations in number of heads, spacing and light levels will establish a hierarchy for the streets and neighborhoods. A complimentary fixture will be used on interior SAP East neighborhood streets.

The drawings and photos provided illustrate the specific light fixtures that have been selected for Villebois streets, trails and parks. The plan illustrated on the following page describes the concept for the placement and spacing of the selected fixtures, and the light level, or "Candle Power" that is recommended for different streets at Villebois. The general concept is for light levels to remain low around the community's edges, especially adjacent to protected greenspaces, and increase in intensity closer to the Village Center.

**Sustainability:** In order to respect the community's sense of place and proximity to nature, the lighting at Villebois is also restricted to those fixtures that minimize light pollution, and allow night-sky viewing.

LIGHT FIXTURE

**Luminaire:** Hadco S8867C

**Pole:** 14 Foot Decorative Cast Aluminum - Anchor Base  
Hadco: P-2065-14-A or Hapco: 77920

16 Foot Decorative Cast Aluminum  
Hadco: P-2165-16-A or Hapco: 77920X16

**Footing:** AB Chance: C11242NG4TK w/ round mouning plate  
Concrete footing PGE specifications - In Swales

**Finish:** Black

**Location:** Barbur Rd, Brown Rd. Villebois Loop and Boeckman Extension and Greenway to Tonquin Trail.



Examples of selected light fixtures from recently-built projects.



Washington

**Construction:** The pole shaft is constructed using North Pacific's patented filament winding pattern for improved structural performance. The pole is fabricated using polyester resin and contains a minimum of 65 percent fiberglass by weight (electrical grade fiber).

**Strength:** The pole will withstand up to and including 120 mph winds with a 1.3 gust factor and up to a 16 EPA if specified. Standard pole strength is 90 mph with a 3.0 EPA. We use an approved industry certified break-test machine to ensure safety & quality.

**Coating:** The coating is approximately 1.5 ml thick, and is applied to the outside of the pole wall. Colors are pigmented throughout the pole wall during manufacturing.

**Colors:** Twelve standard colors are available: ebony black, dark bronze, medium bronze, frost white, utility gray, buckskin tan, red blood, cocoa brown, butter yellow, royal blue, confederate gray, dark green. Refer to color palette in color section of the catalog.

**Finish:** Standard finish is smooth and has a 1.5 ml thick polyurethane paint. Other finishes include, brushed aluminum, aggregate & marble.

**Hand Hole:** The hand hole is 2.5 inches x 5 inches unless otherwise specified. This can be placed either in the decorative shroud or in another location if required.

**Heights:** Standard heights range from 8 feet to 35 feet . Custom heights also available.

**Tenon:** Standard tenon top 2 3/8 inches to 3 inches, made in steel; Other available sizes are 4 inch and custom.

**Shaft:** The fluted shafts come in 8 or 16 flutes. They are tapered and are constructed solely of FRC.

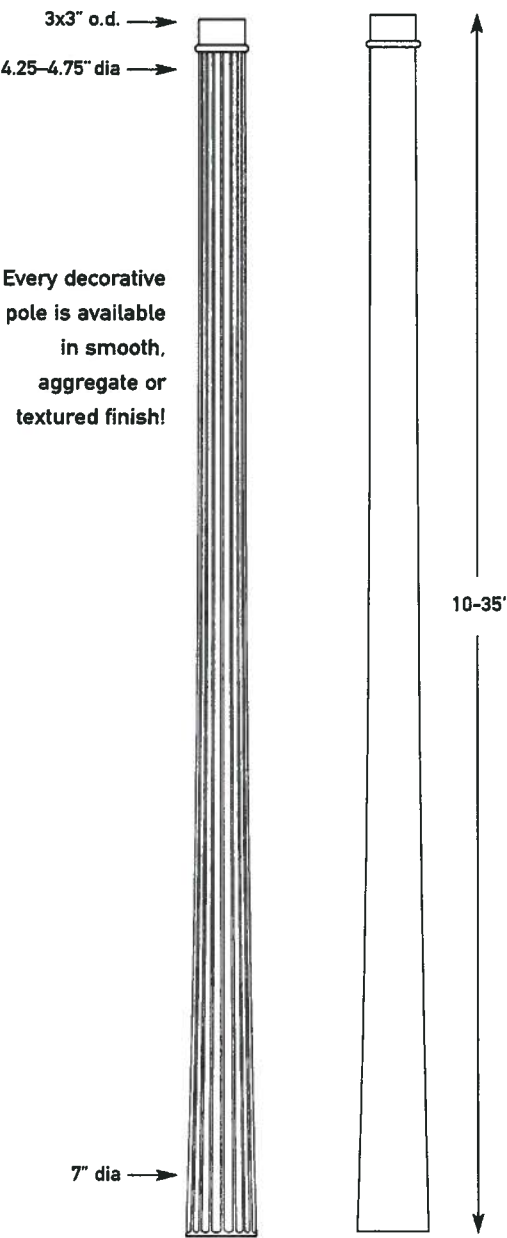
**Anchor Base:** Anchor base plates are made of galvanized steel and can be customized to your specifications.

**Arms:** Aluminum mast/banner arms are manufactured to your requirements. Arms and banners will match the pole color chosen.

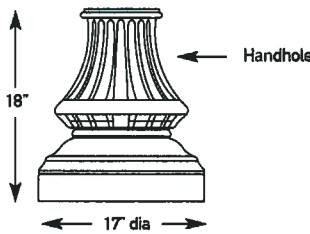
**Base Plate:** The poles come in anchor base or direct embedded.

**Decorative Shrouds:** A variety of standard shrouds are available to fit any of our poles. Custom shrouds can be made to specification.

8 OR 16 FLUTED LIGHTPOLE



See an overview of all our decorative shrouds on page 15



LIGHTING MASTER PLAN CONCEPT

SAP East interior neighborhood lighting will implement all master lighting plan concepts. Connectivity, Diversity and Sustainability objectives are met by the use of this complimentary light pole and approved light fixture, that are a cost effective means of implementing the Lighting Master Plan Concept.

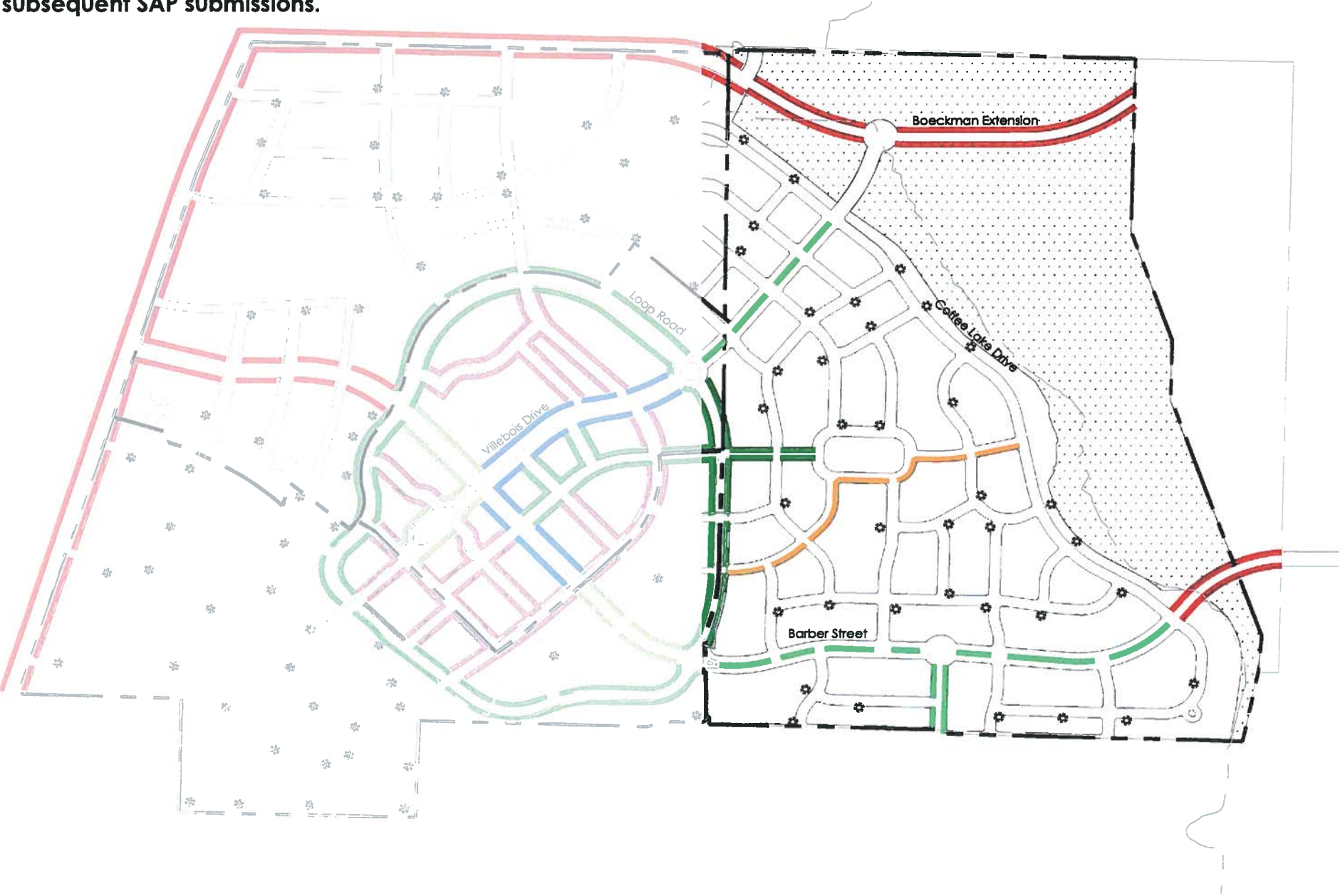
LIGHT POLE

- Pole:** 14 Foot Pole, 8 Fluted  
Fiberglass or Aluminum option  
*North Pacific Group, Inc.: Washington*
- Footing:** Direct Bury
- Finish:** Standard Finish, Ebony Black

Substitutions to the above light pole must be an approved equal as determined by the Master Planner and pre-approved by PGE.



NOTE: Lighting Concept Plan is for illustrative purposes outside of the current SAP submission area. This plan will be updated as minor modifications are made in subsequent SAP submissions.



LEGEND

HADCO S8867C LIGHTS

- Single Head Light Fixture  
140' O.C.  
0.4 CP @ 200 watts
- Single Head Light Fixture  
155' O.C.  
0.4 CP @ 200 watts
- Single Head Light Fixture  
120' O.C.  
0.6 CP @ 200 watts
- Single Head Light Fixture  
95' O.C.  
0.9 CP @ 200 watts
- Double Head Light Fixture  
120' O.C.  
0.6 CP @ 200 watts
- Single Head Light Fixture  
65' O.C.  
0.9 CP @ 200 watts
- Single Head Light Fixture  
50' O.C.  
1.2 CP @ 200 watts
- Single Head Light Fixture  
100 watts

HADCO S8867C LIGHTS - Washington Pole

- Single Head Light Fixture  
100 watts
- SAP Boundary

Note:  
1. Light fixtures are triangulated at described spacing.  
2. CP = Candle Power; O.C. = On Center

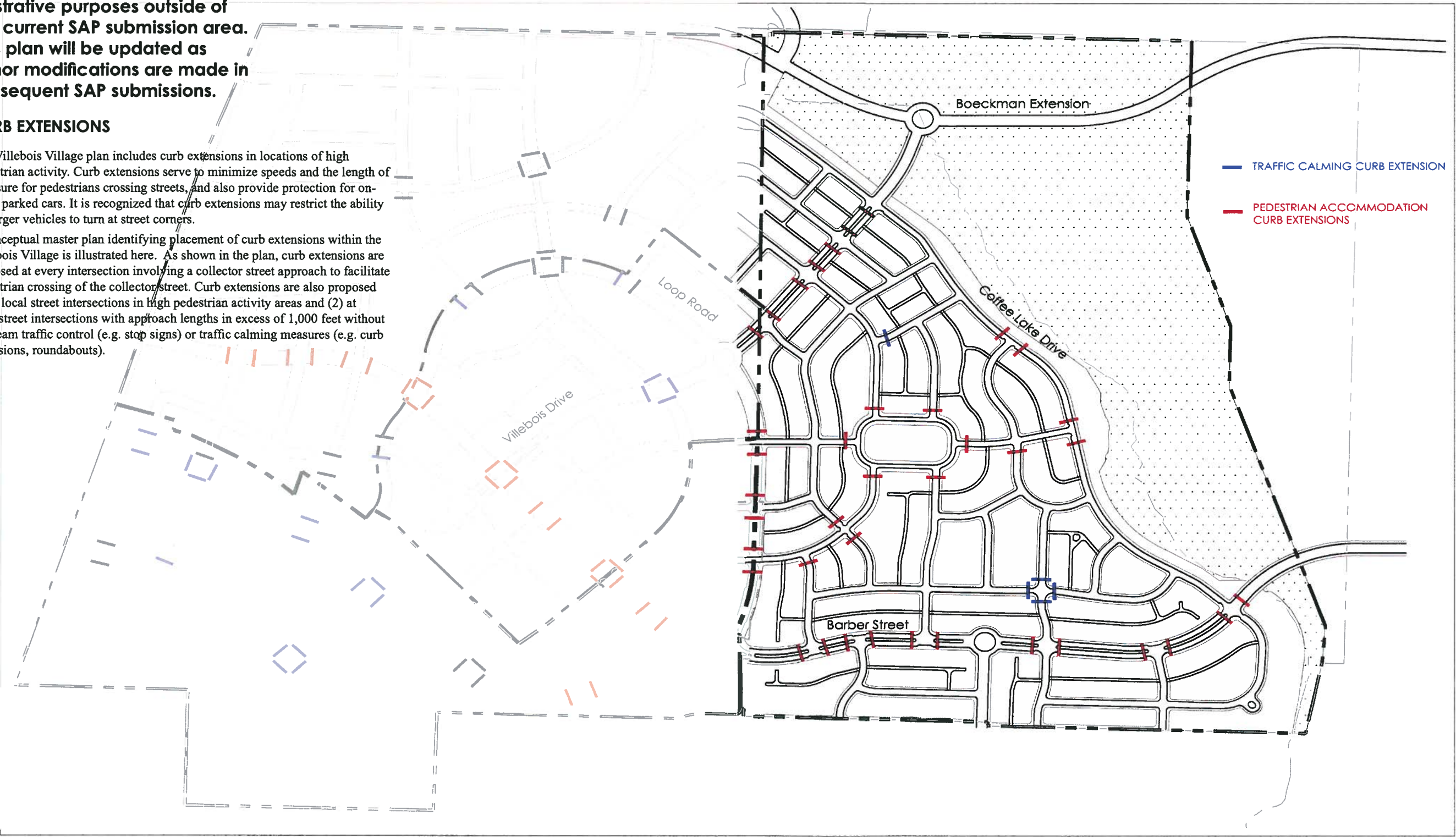


**NOTE:** Curb Extension Plan is for illustrative purposes outside of the current SAP submission area. This plan will be updated as minor modifications are made in subsequent SAP submissions.

**CURB EXTENSIONS**

The Villebois Village plan includes curb extensions in locations of high pedestrian activity. Curb extensions serve to minimize speeds and the length of exposure for pedestrians crossing streets, and also provide protection for on-street parked cars. It is recognized that curb extensions may restrict the ability for larger vehicles to turn at street corners.

A conceptual master plan identifying placement of curb extensions within the Villebois Village is illustrated here. As shown in the plan, curb extensions are proposed at every intersection involving a collector street approach to facilitate pedestrian crossing of the collector street. Curb extensions are also proposed at (1) local street intersections in high pedestrian activity areas and (2) at local street intersections with approach lengths in excess of 1,000 feet without upstream traffic control (e.g. stop signs) or traffic calming measures (e.g. curb extensions, roundabouts).



**CURB EXTENSION CONCEPT PLAN**

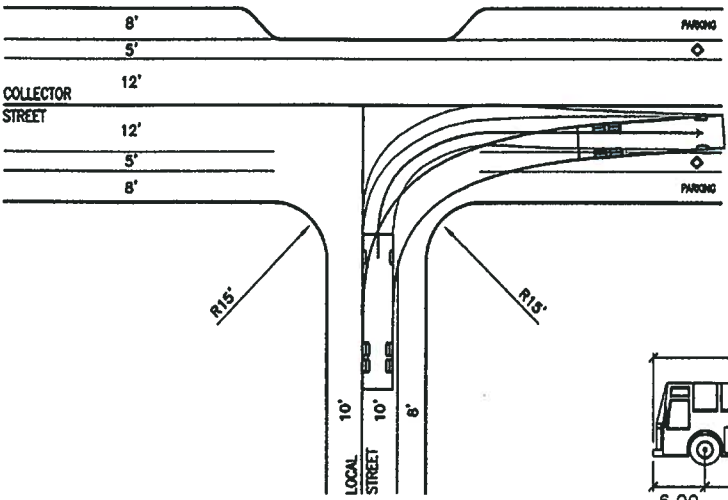


CURB EXTENSIONS

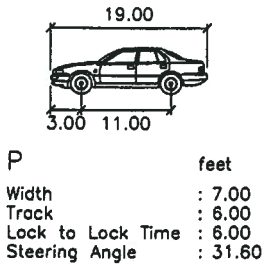
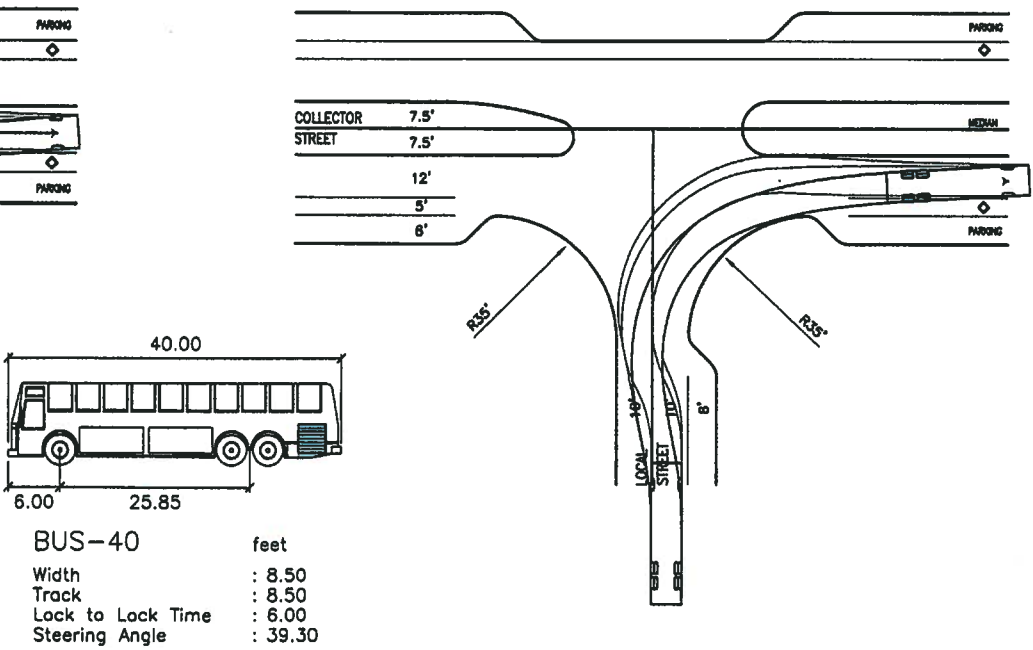
The Villebois Village plan includes curb extensions in locations of high pedestrian activity. Curb extensions serve to minimize speeds and the length of exposure for pedestrians crossing streets, and also provide protection for on-street parked cars. It is recognized that curb extensions may restrict the ability for larger vehicles to turn at street corners.

The following basic principles shall be used for the placement and design of curb extensions:

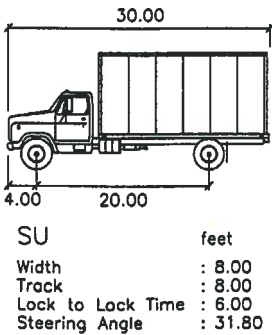
- A minimum of 20-foot face-of-curb- to face-of-curb street width shall be provided at all residential street intersections, even where curb extensions are located. In the Village Center (inside the Village Loop), the minimum curb-to-curb street width should be 22 feet, in order to accommodate delivery and garbage truck movements.
- Fire trucks, buses, and single-unit trucks (i.e., garbage trucks) shall be able to negotiate from collector/arterial streets without crossing the collector/arterial street centerline. Fire trucks shall be able to negotiate through residential streets, although it is acceptable for them to cross the street centerline on residential streets.
- Passenger car turning movements shall be able to stay within the street centerline on all streets.
- Bike lanes shall not be forced into vehicle travel lanes.
- Applicable curb return radii for combinations of collector street/local street intersections with various cross-sections are illustrated on this page.



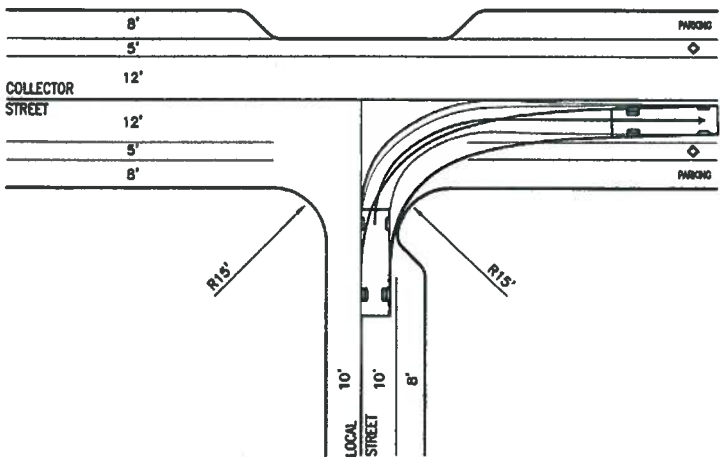
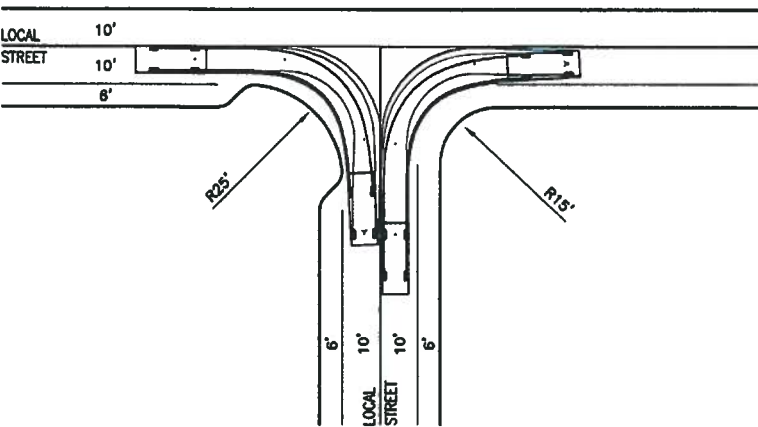
BUS/FIRE TRUCK TURNING RADII DETAILS

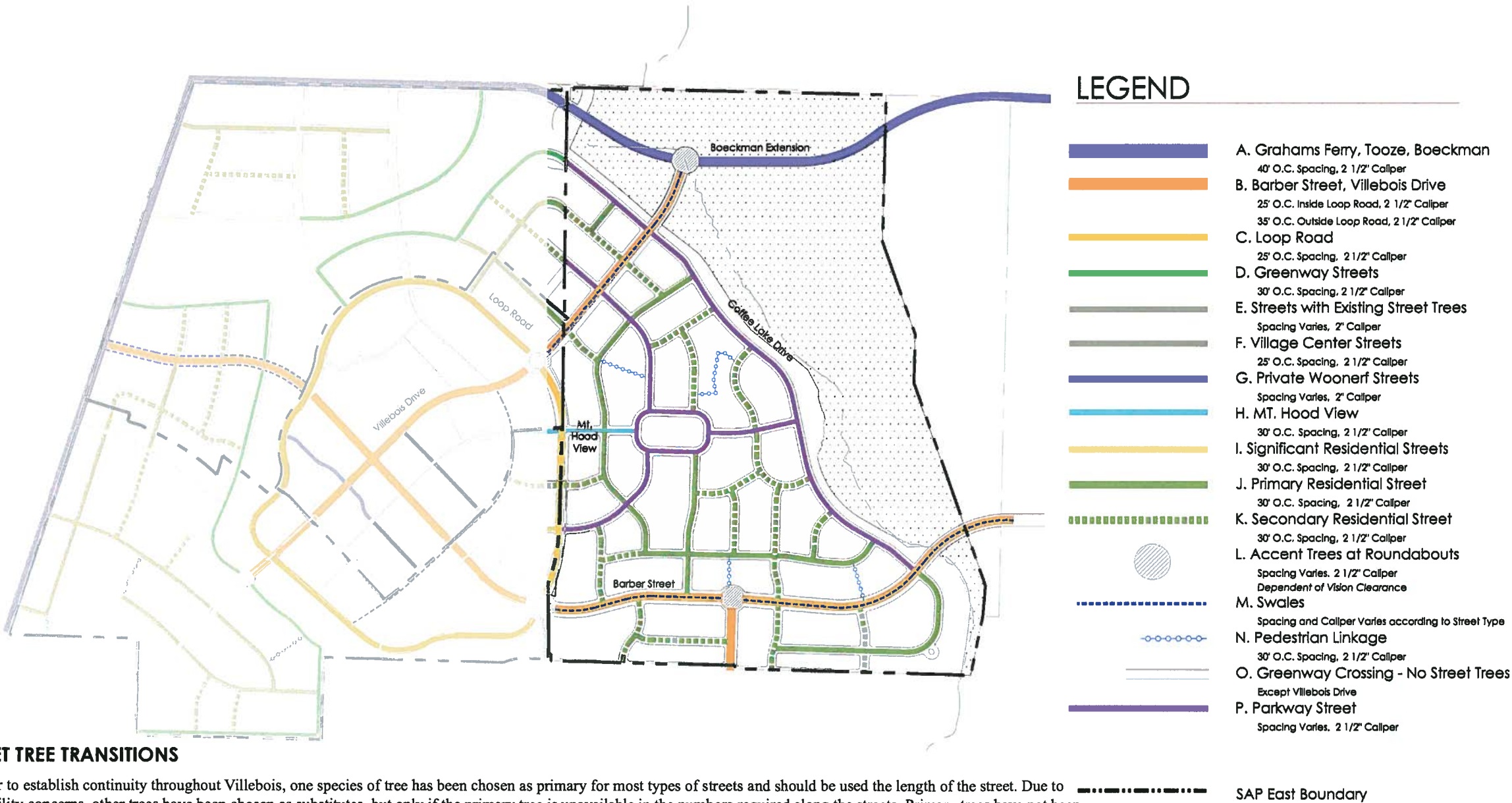


CAR TURNING RADII DETAIL



TRUCK TURNING RADII DETAILS





STREET TREE TRANSITIONS

In order to establish continuity throughout Villebois, one species of tree has been chosen as primary for most types of streets and should be used the length of the street. Due to availability concerns, other trees have been chosen as substitutes, but only if the primary tree is unavailable in the numbers required along the streets. Primary trees have not been chosen for each of the neighborhood street trees. Trees should be chosen from the list provided for the length of each street (see following pages). Species shall match on opposite sides of the street and change only at intersections. A change in species due to lack of availability is permitted only at the following points:

- Arterial Streets:
  - Intersection of Tooze Road and Grahams Ferry Road
  - Intersection of Boeckman Extension and Villebois Drive
- Collector Streets:
  - Intersections of Barber Street and Loop Road
  - Roundabout intersection of Barber and Brown
- Greenway Streets
  - Intersection of Coffee Lake Drive and Villebois Drive

A change in species due to soil conditions is allowed at locations as shown on the SAP Street Tree Plan.

NOTE: Street Tree Plan is for illustrative purposes outside of the current SAP submission area. This plan will be updated as minor modifications are made in subsequent SAP submissions.



STREET TREE CONCEPT

The Street Tree Concept for Villebois addresses the Master Plan’s core principles of connectivity, diversity and sustainability. Street tree patterns are key to a community’s visual quality and livability. The following is a summary of how the selection of street trees relate to Villebois’ core principles:

**Connectivity:** A carefully-selected palette of street trees can serve as an intrinsic form of wayfinding. The choice of trees at Villebois has been tailored to match the significance and role of the street. A hierarchy of street trees has been established in direct response to the hierarchy of streets. For example, broader arterials or collectors feature larger, taller trees with broad foliage in summer. Neighborhood street trees contribute to a more intimate scale, and perhaps might grow over the street to form a tunnel effect as the canopies meet from either side of the street. Streets along greenways feature trees that match the character of greenway plantings. On certain streets, views of Mt. Hood are emphasized through the use of trees that are tall and columnar.

Another important element in the selection of street trees is the recognition of the need to provide a continuity of vegetation types, as a wayfinding element. For example, in 20 years, someone could be driving on the Villebois Village Center Loop Road, which features colorful Tulip Trees and arriving at a roundabout, they will be able to discern that to continue along the Loop Road, they can simply follow the line of Tulip Trees that curves ahead beyond the roundabout. Similarly, pedestrians at Villebois could recognize a woonerf by noticing the distinct Honey Locust tree that may only be planted along such streets.

**Diversity:** The wide variety of trees planted along streets will serve to enhance the diversity of housing choices and open spaces. In the future, residents of different Villebois neighborhoods will be able distinguish their particular “place” by the type of street tree growing there. Implicit in this goal of diversity is the recognition that there should be no areas in Villebois that feature monotonous stretches of a single type of tree. Diversity of bird and small mammal habitat is another important benefit from the planting of a variety of tree species, which also contributes to the level of sustainability of Villebois.

**Sustainability:** Villebois will demonstrate a certain measurable level of environmental protection through the provision of numerous street trees, which can cool micro climates by shading asphalt and filtering breezes. Street trees have also been proven to clean certain amounts of auto emissions and they serve to ‘capture’ rainwater and release it slowly. Street trees, when combined with carefully designed open spaces and protected ecosystems nearby, can also provide important migratory and resident bird habitat.

**Street Tree Transitions:** Establishing continuity is also an important aspect of street tree selection. Continuity helps to link neighborhoods and streets and establish a sense of order and importance for certain streets. In order to establish continuity throughout Villebois, one species of tree has been chosen as primary for certain streets and should be used the length of the street, as indicated in the Street Tree Diagram. Due to availability concerns, other trees have been chosen as substitutes, but only if the primary tree is unavailable in the numbers required along the streets. A change in species may be used due to lack of availability at the following points:

Arterial Streets:

- Intersection of Tooze Road and Grahams Ferry Road
- Intersection of Boeckman Extension and Villebois Drive

Collector Streets:

- Intersections of Barber Street and Loop Road

Greenway Streets

- Intersection of Coffee Lake Drive and Villebois Drive/Boeckman Extension.
- Roundabout intersection in SAP East

A change in species is allowed due to soil conditions as shown on the SAP Street Tree Plan.

Primary trees have not been chosen for each of the neighborhood street trees. Trees should be chosen from the list provided for the length of each street. Species shall match on opposite sides of the street and change only at intersections.

Primary species may be changed based on quality and availability with Master Planner approval.

STREET TREE LIST & PHOTOGRAPHS

**\* Asterix denotes that this tree is the preferred species, to be planted in continuous stretches of approx. 600' length. All other species listed may be considered as substitutes subject to approval by the master planner.**

**NOTE: Color bars refer to lines used in preceding street tree diagram.**



Quercus rubra - Red Oak



ARTERIAL / COLLECTOR STREET TREES:  
Grahams Ferry Road, Tooze Road,  
Boeckman Extension

- \**Quercus rubra* - Red Oak
- Quercus coccinea* - Scarlet Oak
- Tilia tomentosa* - Silver Linden
- Tilia x euchlora* - Crimean Linden
- Fagus sylvatica* - European Beech
- Quercus macrocarpa* - Bur Oak



Ulmus hybrids - Accolade Elm



COLLECTOR STREET TREES:  
Barber Road, Villebois Drive

- \**Ulmus japonica x wilsoniana 'Morton'* - Accolade Elm
- \**Zelkova serrata 'Village Green'* - Village Green Zelkova
- Ulmus 'Frontier'* - Frontier Elm
- Zelkova serrata 'Green Vase'* - Green Vase Zelkova



Liriodendron tulipifera - Tulip Tree



LOOP ROAD STREET TREES\_

- \**Liriodendron tulipifera* - Tulip Tree
- Platanus acerifolia 'Bloodgood'* - Bloodgood London Planetree
- Ginkgo biloba 'Autumn Gold'* - Autumn Gold Ginkgo



Quercus alba - White Oak



GREENWAY STREETS TREES: D Street

- \**Quercus alba* - White Oak
- Quercus rubra* - Red Oak
- Aesculus x carnea 'Briotti'* - Red Horsechestnut
- Quercus robur* - English Oak
- Cladrastis kentukea* - Yellowwood

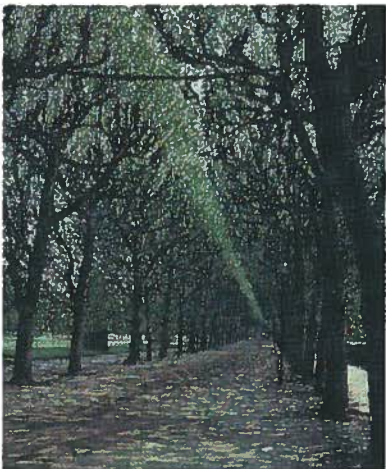




*Liriodendron tulipifera 'Fastigiatum'* - Columnar Tulip Tree

**MT. HOOD VIEW STREET TREES:  
T Street**

- \**Liriodendron tulipifera 'Fastigiatum'* - Columnar Tulip Tree
- Ginkgo biloba 'Princeton Sentry'* - Princeton Sentry Ginkgo
- Pyrus calleryana 'Glens Form'* - Chanticleer Pear
- Fagus sylvatica 'Dawyck Purple'* - Dawyck Purple Beech



*Platanus acerifolia* - London Planetree

**SIGNIFICANT RESIDENTIAL STREET TREES: H, L & R Streets**

- Landscape Strips 5' - 8' Wide*
- Acer x fremanii 'Autumn Blaze'* - Autumn Blaze Maple
  - Zelkova serrata 'Green Vase'* - Green Vase Zelkova
  - Zelkova serrata 'Village Green'* - Village Green Zelkova

- Landscape Strips 8'+ Wide*
- Aesculus x carnea 'Briotti'* - Red Horsechestnut
  - Platanus acerifolia 'Bloodgood'* - Bloodgood London Planetree
  - Cercidophyllum japonicum* - Katsura Tree
  - Quercus palustris* - Pin Oak
  - Quercus macrocarpa* - Bur Oak
  - Ginkgo biloba* - Ginkgo



*Acer x fremanii 'Armstrong'* - Armstrong Red Maple



*Aesculus x carnea* - Red Horsechestnut

**PRIVATE WOONERF STREET TREES**

- Pyrus calleryana 'Glensform'* - Chanticleer Pear
- Pyrus calleryana 'Redspire'* - Redspire Pear
- Zelkova serrata 'Musashino'* - Musashino Zelkova
- Acer x fremanii 'Armstrong'* - Armstrong Red Maple
- Gleditsia triacanthos 'Shademaster'* - Shademaster Honeylocust
- Gleditsia triacanthos 'Skyline'* - Skyline Honeylocust
- Gleditsia triacanthos 'Impcole'* - Imperial Honeylocust
- Koelreuteria paniculata* - Goldenrain Tree

**PRIMARY RESIDENTIAL STREET TREES: C & B Streets**

- Landscape Strips 5' - 8' Wide*
- \**Acer truncatum x platanoides 'Keithsform'* - Norwegian Sunset Maple
  - Tilia x euchlora* - Crimean Linden
  - Fagus sylvatica* - European Beech
  - Fagus sylvatica 'Riversii'* - Rivers Beech
  - Acer x fremanii 'Autumn Blaze'* - Autumn Blaze Maple
  - Fraxinus americana 'Autumn Applause'* - Autumn Applause Ash

- Landscape Strips 8'+ Wide*
- \**Fraxinus oxycarpa 'Raywood'* - Raywood Ash
  - Aesculus x carnea 'Briotti'* - Red Horsechestnut
  - Quercus coccinea* - Scarlet Oak
  - Celtis occidentalis* - Hackberry



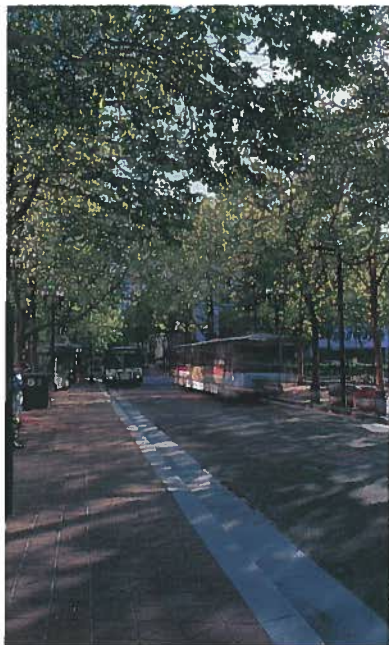
*Quercus robur* - English Oak

**SECONDARY RESIDENTIAL STREET TREES: K, J, M, N & S Streets**

- Landscape Strips 5' - 8' Wide*
- \**Acer rubrum 'Scarsen'* - Scarlet Sentinel Maple
  - \**Crataegus viridis 'Winter King'* - Winter King Hawthorne
  - \**Fraxinus americana 'Autumn Applause'* - Autumn Applause Ash
  - \**Pyrus calleryana 'Aristocrat'* - Aristocrat Pear
  - Acer pseudoplatanus* - Sycamore Maple
  - Koelreuteria paniculata* - Goldenrain Tree
  - Acer rubrum 'Red Sunset'* - Red Sunset Maple
  - Cornus florida* - Flowering Dogwood

- Landscape Strips 8'+ Wide*
- Quercus robur* - English Oak
  - Catalpa speciosa* - Northern Catalpa
  - Quercus acutissima* - Sawtooth Oak
  - Quercus macrocarpa* - Bur Oak





Gleditsia triacanthos - Honeylocust

**VILLAGE CENTER STREET TREES:  
O, F & P Streets**

- Gleditsia triacanthos* 'Shademaster' - Shademaster Honeylocust
- Gleditsia triacanthos* 'Skyline' - Skyline Honeylocust
- Pyrus calleryana* 'Glensform' - Chanticleer Pear
- Pyrus calleryana* 'Redspire' - Redspire Pear
- Platanus acerifolia* 'Bloodgood' - Bloodgood London Planetree
- Sophora japonica* - Chinese Scholar Tree
- Acer x fremanii* 'Armstrong' - Armstrong Red Maple



Cercis canadensis - Eastern Redbud

**ACCENT TREES FOR ROUNDABOUTS  
AND INFILL ON STREETS WITH  
EXISTING TREES: I & Q Streets**

- \**Stewartia pseudocamellia* - Japanese Stewartia
- Cercis canadensis* - Eastern Redbud
- Cornus florida* - Flowering Dogwood
- Pyrus calleryana* 'Aristocrat' - Aristocrat Pear



Fraxinus latifolia - Oregon Ash



Cercidophyllum japonicum - Katsura Tree

**STREET TREES FOR SWALES**

- \**Fraxinus pennsylvanica* 'Summit' - Summit Ash
- Alnus rubra* - Red Alder
- Fraxinus latifolia* - Oregon Ash
- Quercus bicolor* - Swamp White Oak
- Salix babylonica* - Babylon Weeping Willow
- Ulmus japonica x wilsoniana* 'Morton' - Accolade Elm (Side Slope Only)
- Ulmus* 'Frontier' - Frontier Elm (Side Slope Only)
- Zelkova serrata* 'Green Vase' - Green Vase Zelkova (Side Slope Only)
- Zelkova serrata* 'Village Green' - Village Green Zelkova (Side Slope Only)
- Acer macrophyllum* - Big Leaf Maple (12' Minimum Planting Areas)



Acer x fremanii 'Autumn Blaze' - Autumn Blaze Maple

**PARKWAY STREETS TREES:**

- Landscape Strips 5' - 8' Wide**
- \**Acer x fremanii* 'Autumn Blaze' - Autumn Blaze Maple (Coffee Lake Drive)
- Fraxinus pennsylvanica* 'Cimmzam' - Cimmamon Ash
- Fraxinus pennsylvanica* 'Summit' - Summit Ash
- Landscape Strips 8'+ Wide**
- \**Cercidophyllum japonicum* - Katsura Tree
- Quercus coccinea* - Scarlet Oak

**TREES FOR MINOR PEDESTRIAN  
PATHWAYS**

- Quercus alba* - White Oak
- Quercus rubra* - Red Oak
- Aesculus x carnea* 'Brioti' - Red Horsechestnut
- Quercus robur* - English Oak
- Cercidiphyllum japonicum* - Katsura Tree
- Acer grandidentatum* 'Schmidt' - Rocky Mountain Glow Maple
- Acer plantanoides* 'Columnar' - Columnar Norway Maple
- Acer rubrum* 'Armstrong' - Armstrong Maple
- Pyrus calleryana* 'Glensform' - Chanticleer Pear



## SITE FURNISHINGS CONCEPT

Site furnishings at Villebois have been selected for their simplicity and elegance of design and to provide continuity between private dwellings and public space. Site furnishings are the background elements of a community which serve to reinforce the aesthetic theme of a place like Villebois. One rarely thinks about the bench in a park, or the simple bicycle rack, but these are the elements that build identity and provide continuity.

**Connectivity:** An extensive network of pedestrian sidewalks and the Villebois Greenway enhances the connectivity throughout Villebois. Site furnishings are support elements for these pedestrian connections creating strong links between neighborhoods, parks, and the Village Center.

**Diversity:** While it is important to use similar elements to develop aesthetic unity, it is equally important to include a variety of amenities to build diversity throughout Villebois. For example, a teak bench has been chosen for neighborhood parks to create a more park-like character, whereas the hardwood bench with metal armrests will be placed in the Village Center and the Greenway's edge to create a more urban feeling. Also, wood bollards will be installed at Greenway crossings and will contrast with iron bollards at the Village Center Plaza, helping to give these areas different characteristics.

**Sustainability:** Much of the site furnishings for Villebois were chosen because of the type of wood and harvesting methods the manufacturers guarantee. For example, the 'Ipe' wood in the "Plainwell Series" bench is certified by the Forestry Stewardship Council (FSC). Wood products that carry the FSC logo are guaranteed to be from well-managed forests with environmental management as a top priority.

The following pages and the next four pages show specific models of site furnishings which have been selected for Villebois. Substitutions must be approved by the Master Planner and should match these models as closely as possible. Wherever possible, site furnishings should consider suppliers that use materials and production processes that are sustainable and environmentally benign. Part of this consideration includes choosing local suppliers that use materials from Oregon. Durability and ease of maintenance of the furnishings are equally important.



## URBAN / GREENWAY BENCH

**Manufacturer:** Gardenside, Ltd.

**Model:** #2316 Westwood Bench

**Material:** Sustained-Yield Teak

**Finish:** No finish.

**Size:** 72" or 96" Length



## NEIGHBORHOOD PARKS BENCH

**Manufacturer:** Gardenside, Ltd.

**Model:** #2304 Glenmore Bench

**Material:** Sustained-Yield Teak

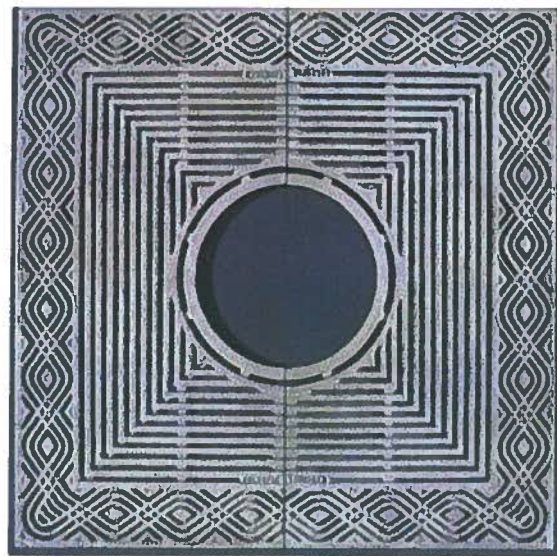
**Finish:** No finish

**Size:** 71" Length, 35" Height, 20' Depth

The Glenmore Bench is planned for hardscape areas of the neighborhood parks. The Westwood Bench is acceptable for use along trails, paths, greenway and lawn areas.

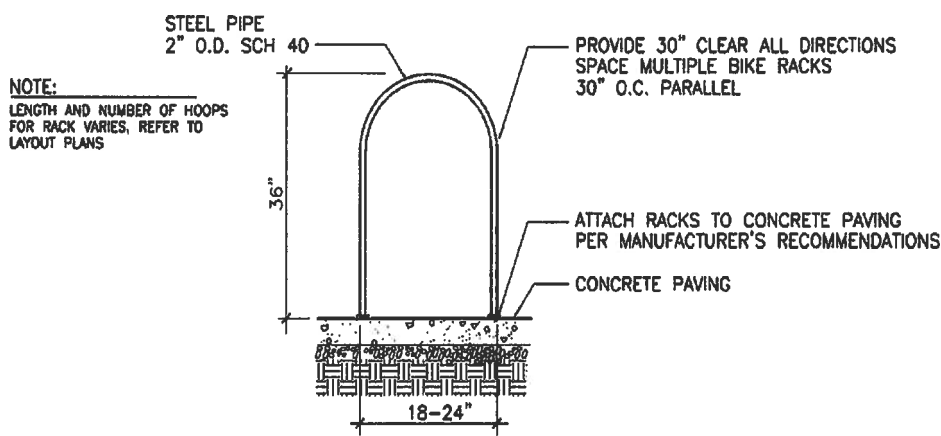
*Substitution requests must be approved by the Master Planner.*





**TREE GRATE**

**Manufacturer:** Olympic Foundry  
**Model:** CNK Series 48  
**Material:** Cast Iron  
**Finish:** None  
**Size:** 4’ Square; 2 sections. 16” Tree hole diameter



**BICYCLE RACK**

**Manufacturer:** Function First Bike Security  
**Model:** The Bike Rib  
**Material:** Steel Pipe  
**Finish:** Powdercoat Paint, Black only  
**Size:** 1.25" Schedule 40 Steel Pipe; 18" W/32" H  
Can be grouped as 2, 3 or 4 ribs, up to 90" long.

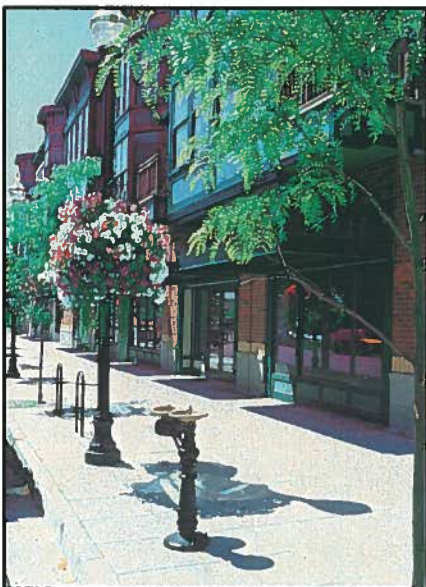
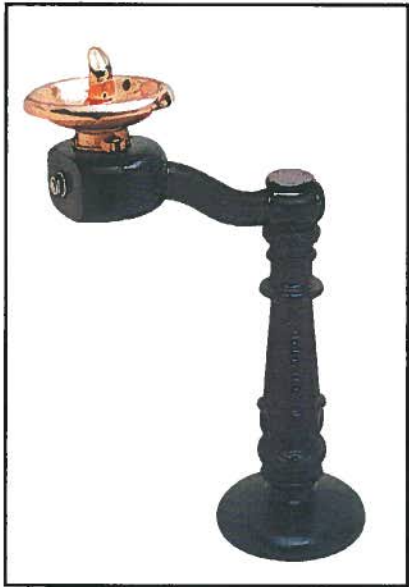


**TRASH/RECYCLING RECEPTACLE**

**Manufacturer:** Landscape Forms  
**Model:** Scarborough Trash Receptacle  
**Material:** Spun metal  
**Finish:** Panguard II®, Black, powdercoat option.  
**Sizes:** 25" Diameter 33" Height; 30 gallon capacity.

**DRINKING FOUNTAIN**

**Manufacturer:** Murdock  
**Model:** MC-76-1  
**Material:** Iron Pedestal / Brass Bowls  
**Finish:** Oil Based Paint, Black

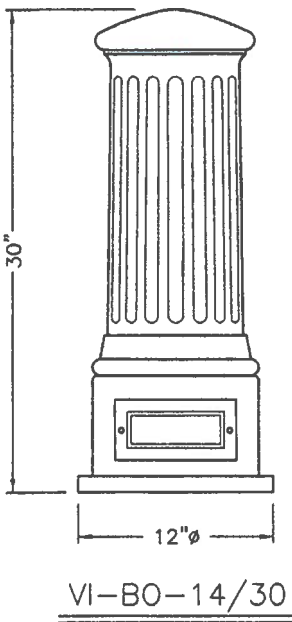
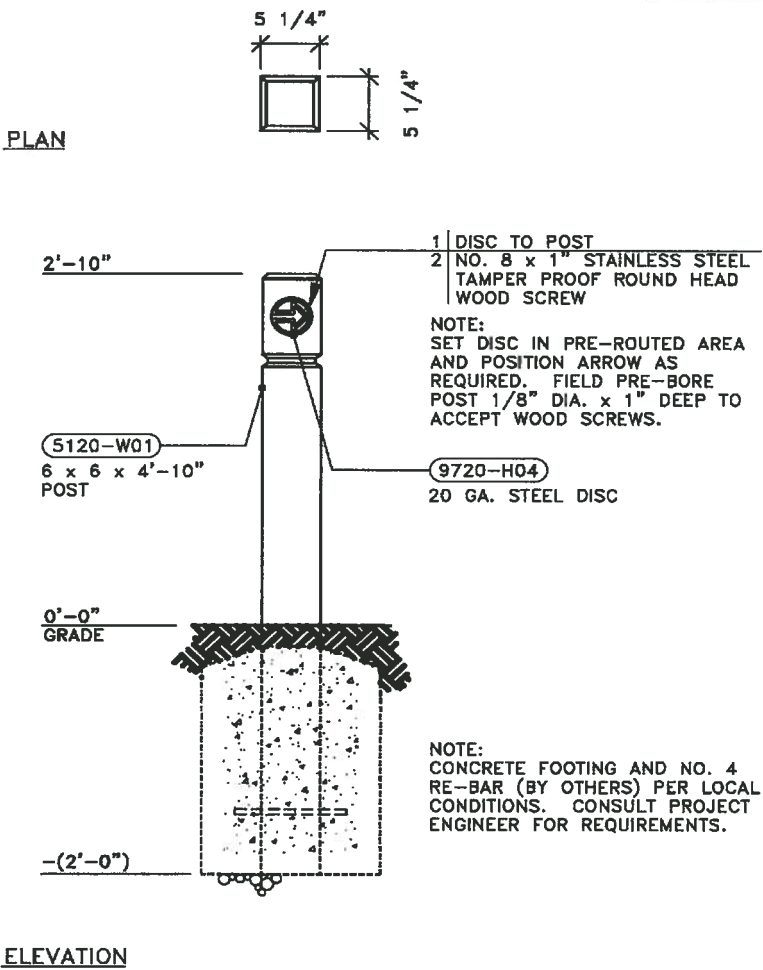


Orenco Station

*Substitution requests must be approved by the Master Planner.*

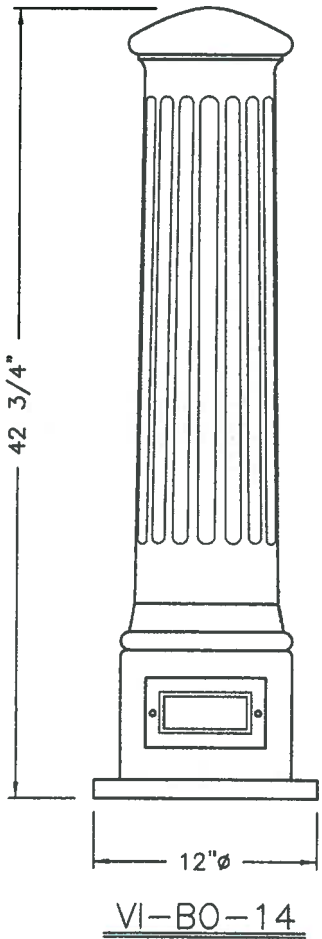
PARKS AND PATH WAYFINDING BOLLARD

**Manufacturer:** Timberform  
**Model:** Timber Bollard with directional arrow, 2553-3  
**Material:** Seasoned Douglas Fir  
**Finish:** Clear preservative  
**Sizes:** 6" x 6" Square timber, 2'-10" height.



URBAN BOLLARD

**Manufacturer:** Visco  
**Model:** VI-BO-14; VI-BO-14/30  
**Material:** Steel or cast-iron  
**Finish:** Powder Coated, Painted Black  
**Sizes:** 30" or 42 3/4" Tall; Base 12" Diameter



Bollards at  
Orenco Station



PICNIC TABLE

**Manufacturer:** Old Growth Again Restoration Forestry  
**Model:** Forever Six Foot, Forever Eight Foot  
**Material:** Recycled Old-Growth Redwood  
**Finish:** Linseed oil/Turpentine Finish  
**Sizes:** Length: 5'-10" or 7'-10"; Width: 5'-7"; Height 2'-6"

*Substitution requests must be approved by the Master Planner.*





## PLAY STRUCTURES

Playgrounds and play structures are an integral part of community parks. A playground should be a social place for children as well as for parents. The above photos show a typical play structure that meets the general design intent for Villebois. Actual Villebois playground sizes and locations will be determined in the individual Specific Area Plans.

The design of the play areas should have a balance of activities and diversity to challenge children of all ages. There should be multiple structures and linkages to encourage movement and promote exploration. There should also be interactive equipment such as swings which are enjoyed by adults as well as children. Above all, it is important for the play areas to be safe as well as accessible to children with disabilities.

There is no specific manufacturer recommended, but the play structures chosen should meet the following technical requirements:

- Must comply to ASTM F- 1487: Standard Consumer Safety Performance Specifications for Playground Equipment for Public Use.
- Must be IPEMA-certified: IPEMA is a non-profit organization that tests play equipment confirming manufacturers conformance to ASTM F - 1487.

- Hardware must be stainless steel with lifetime warranty.
- Structure materials must be monochromatic with earthtone colors matching other site furnishings, preferably dark green. Primary colors are not acceptable.
- Safety surface material is required for all areas within the fall zone of the play structures. Acceptable surface material is IPEMA certified Engineered Wood Fiber to a minimum depth ten inches (10").
- Platforms - minimum 8" and maximum 72" in height for youth play areas
- Platforms - minimum 8" and maximum 48" in height for tot play areas
- Transitional platforms or ramps meeting ADA requirements in areas for children with disabilities
- Various ground-level activities



**GOAL**

To preserve existing trees where they will be an amenity for the community and integral to a diverse, sustainable and well-connected Village.

**POLICIES**

- Existing trees six inches DBH or more shall be preserved when healthy and compatible with the project design. Native species of trees and trees with historical importance shall be given special consideration for retention.
- Open space areas shall be organized to incorporate existing trees where feasible.
- Existing treed streets shall be incorporated into the design and the trees preserved to the extent feasible.
- The alignment of public streets and private lanes shall consider preservation of existing trees. Alternate street sections shall be pursued as needed to preserve trees that are integral to the design of the Village, and shall require City Engineer approval.
- Lot lines shall be organized to locate trees along lot lines and non-typical shaped lots shall be used where feasible to preserve trees that would provide an amenity to the community and not compromise the design of an urban village.

**IMPLEMENTATION MEASURES**

- A Tree Preservation Plan, which meets the requirements of the City of Wilsonville Ordinance 464 Tree Preservation and Protection, shall be prepared with each Specific Area Plan that classifies to aid in determining whether the tree is desirable to preserve and is capable of survival. Tree classification shall be conducted by a duly licensed and certified arborist and shall include the following:
  - Health, structure and vigor of tree;
  - Age and/or DBH;
  - Species rating per ISA standards for the Pacific NW Region;
  - Strong or weak wooded;
  - Compatibility with development and ability to withstand impacts;
  - Free-standing well formed tree or within intact groupings;
  - Mature form and size, level of visual interest, and aesthetic contribution;
  - Historical importance.

The Arborist report shall take into account the following categories:

**"IMPORTANT" CLASSIFICATION IS COMPRISED OF:**

- Trees that rated high in the following categories:
- Health, structure and vigor of tree;
  - Age and/or DBH;
  - Species rating per ISA standards for the Pacific NW Region;
  - Strong or weak wooded;
  - Compatibility with development and ability to withstand impacts;
  - Free-standing well formed tree or within intact groupings;
  - Mature form and size, level of visual interest, and aesthetic contribution;
  - or are classified as "good" but have historical importance.

**"GOOD" CLASSIFICATION IS COMPRISED OF:**

- Trees that rated high in the following categories:
- Health, structure and vigor of tree;
  - Age and/or DBH;
  - Species rating per ISA standards for the Pacific NW Region;
  - Strong or weak wooded;
- Trees that rated adequate in the following categories:
- Compatibility with development and ability to withstand impacts;
  - Free-standing well formed tree or within intact groupings;
  - Mature form and size, level of visual interest, and aesthetic contribution;

**"MODERATE" CLASSIFICATION IS COMPRISED OF:**

- Trees that rated adequate in the following categories:
- Health, structure and vigor of tree;
  - Age and/or DBH;
  - Species rating per ISA standards for the Pacific NW Region;
  - Strong or weak wooded;
  - Compatibility with development and ability to withstand impacts;
  - Free-standing well formed tree or within intact groupings;
- Mature form and size, level of visual interest, and aesthetic contribution;

**"POOR" CLASSIFICATION IS COMPRISED OF:**

- Trees in poor health and/or when substantially damaged;
- Trees found to be potentially hazardous based on species history or present condition.

- A Tree Protection Plan shall be prepared by a duly licensed and certified arborist with each Preliminary Development Plan addressing protection of trees prior to construction, during construction, and post-construction. For trees that are to be preserved, the existing grade and drainage pattern within the drip line shall be maintained to the extent feasible and the impact to the tree root system shall be minimized to the extent feasible. Pre-construction measures to protect trees shall include, but are not limited to fencing, activities prohibited within drip line, and removal of adjacent trees. Tree protection measures during construction shall include, but are not limited to, fencing and identification of conditions that would require presence of arborist on site. Tree protection measures after construction may include but are not limited to, tree conservation easements on private property, open space/park dedication, etc. Tree work described in the Tree Protection Plan shall be done to National Standards Institute (ANSI 300) specifications under supervision of a duly licensed and certified arborist. Monitoring inspections shall occur as specified in the Tree Protection Plan.



# VILLEBOIS PLANT LIST

The following list of trees, shrubs and other plants is provided as the basis for selection of plants for Villebois parks and open spaces, public urban spaces, residential pocket parks and housing sites. Substitutions to this plant list must be approved by the Villebois master planner.

## NON-NATIVE PLANTS

### TREES

*Abies concolor* var. — White Fir varieties  
*Abies lasiocarpa* — Rocky Mountain Fir  
*Acer buergeranum* — Trident Maple  
*Acer campestre* — Hedge Maple  
*Acer davidii* — David Maple  
*Acer x freemanii* 'Marmo' — Marmo Maple  
*Acer ginnala* — Amur Maple  
*Acer grandidentatum* 'Schmidt' — Rocky Mtn Glow Maple  
*Acer griseum* — Paperback Maple  
*Acer henryi* — Henry Maple  
*Acer japonicum* (straight species) — Fullmoon Maple  
*Acer nigrum* 'Greencolumn' — Greencolumn Maple  
*Acer palmatum* var. — Japanese Maple  
*Acer platanoides* - Columnar Norway Maple  
*Acer platanoides* - Crimson Sentry Maple  
*Acer platanoides* - Easy Street Maple  
*Acer pseudoplatanus* — Sycamore Maple  
*Acer rubrum* — Red Maple varieties  
*Acer saccharum* var. — Sugar Maple varieties  
*Acer x freemanii* — Autumn Maple varieties  
*Acer x truncatum x platanoides* 'Warrenred' — Pacific Sunset Maple or Norwegian Sunset Maple  
*Betula nigra* — River Birch  
*Calocedrus decurrens* — Incense Cedar  
*Carpinus betulus* 'Fastigiata' — Pyramidal European Hornbeam  
*Cedrus deodara* — Deodar Cedar  
*Cercidiphyllum japonicum* — Katsura Tree  
*Cercis chinensis* — Chinese Redbud  
*Chamaecyparis lawsoniana* — Chamaecyparis varieties  
*Cladrastis lutea* — Yellow Wood  
*Clerodendrum trichotomum* — Harlequin Glorybower  
*Cornus kousa chinensis* — Chinese Kousa Dogwood  
*Crataegus phaenopyrum* 'Washington Lustre' —

Washington Hawthorn  
*Crataegus x lavalley* — Lavalley Hawthorn  
*Cryptomeria japonica* var. — Japanese Cryptomeria varieties  
*Cupressocyparis leylandii* — Leland Cypress  
*Cupressocyparis leylandii* 'Naylor's Blue' — Naylor's Blue Leland Cypress  
*Davidia involucrata* — Dove Tree  
*Disanthus cercidifolius* — Disanthus  
*Fagus sylvatica* — Copper Beech varieties  
*Fraxinus pennsylvanica* — Ash varieties  
*Ginkgo biloba* var. — Ginkgo varieties  
*Gleditsia triacanthos* — Honey Locust varieties  
*Gymnocladus dioica* — Kentucky Coffee Tree  
*Halesia carolina* — Silver Bell  
*Juniperus scopulorum* 'Skyrocket' — Skyrocket Juniper  
*Koelreuteria paniculata* — Goldenrain Tree  
*Laburnum anagyroides* — Goldenchain Tree  
*Lagerstroemia indica* 'Natchez' — Natchez Crepe Myrtle  
*Larix decidua* — European Larch  
*Liriodendron tulipifera* — Tulip Tree  
*Magnolia stellata* 'Royal Star' — Royal Star Magnolia  
*Magnolia x soulangiana* — Saucer Magnolia  
*Magnolia virginiana* — Sweetbay Magnolia  
*Malus* 'Golden Raindrops' — Golden Raindrops Crabapple  
*Malus* 'Snowdrift' — Snowdrift Crabapple  
*Metasequoia glyptostroboides* — Dawn Redwood  
*Nyssa sylvatica* — Sour Gum  
*Ostrya virginiana* — American Hophornbeam  
*Oxydendron arboreum* — Sourwood  
*Parrotia persica* — Persian Parrotia  
*Pinus monticola* — Western White Pine  
*Pinus strobus fastigiata* — Columnar Eastern White Pine  
*Platanus x acerifolia* 'Bloodgood' — London Plane Tree  
*Prunus x blireiana* — Blireiana Plum  
*Prunus serrulata* 'Shirofugen' — Shirofugen Cherry  
*Pyrus calleryana* 'Capital' — Capital Callery Pear  
*Pyrus calleryana* 'Chanticleer' or 'Glen's Form' — Chanticleer or Glen's Form Callery Pear  
*Pyrus calleryana* 'Redspire' — Redspire Callery Pear  
*Quercus phellos* — Willow Oak  
*Quercus robur* — English Oak  
*Quercus rubra* — Red Oak

*Sassafras albidum* — Sassafras  
*Sequoiadendron giganteum* — Giant Sequoia  
*Sequoia sempervirens* — Coast Redwood  
*Sophora japonica* — Japanese Pagoda Tree  
*Sorbus aucuparia* — European Mountain Ash  
*Stewartia koreana* — Korean Stewartia  
*Stewartia monadelphica* — Tall Stewartia  
*Stewartia pseudocamelia* — Japanese Stewartia  
*Styrax japonica* — Japanese Snowbell  
*Styrax obassia* — Bigleaf Japanese Snowbell  
*Tilia americana* 'Redmond' — Redmond American Linden  
*Tilia cordata* var. — Little Leaf Linden varieties  
*Ulmus japonica x wilsoniana* 'Morton' — Accolade Elm  
*Ulmus parvifolia* 'Emerald Vase' — Emerald Vase Lacebark Elm  
*Zelkova serrata* 'Musashino', 'Halka' or 'Green Vase' — Musashino, Halka or Green Vase Zelkova

### SHRUBS

*Abelia grandiflora* 'Edward Goucher' — Edward Goucher Glossy Abelia  
*Abelia grandiflora* 'Prostrata' — Prostrate White Abelia  
*Arbutus unedo* 'Compacta' — Dwarf Strawberry Bush  
*Arctostaphylos* 'John Dourley' — John Dourley Manzanita  
*Azalea species* — Azalea  
*Berberis thunbergii* — Japanese Barberry  
*Berberis thunbergii* 'Crimson Pygmy' — Crimson Pygmy Japanese Barberry  
*Berberis thunbergii* 'Kobold' — Kobold Barberry  
*Berberis verrucolosa* — Warty Barberry  
*Berberis x mentorensis* — Mentor Barberry  
*Buddleia davidii* 'Empire Blue' — Buddleia  
*Callicarpa bodinieri* — Beautybush  
*Caryopteris clandonensis* 'Arthur Simmon' — Arthur Simmon Blue Mist  
*Chaenomeles speciosa* — Chinese Flowering Quince  
*Choisya ternata* — Mexican Ternate Orange  
*Cistus purpureus* — Purple Rock Rose  
*Cornus sericea* 'Alleman's Compact' — Alleman's Compact Redtwig Dogwood  
*Cornus sericea* 'Isanti' — Isanti Redtwig Dogwood  
*Cornus stolonifera* 'Kelseyii' — Kelsey Dogwood  
*Corylopsis spicata* — Spike Winter Hazel

*Cotoneaster horizontalis* — Rock Cotoneaster  
*Cotoneaster lacteus* — Parney Cotoneaster  
*Daphne burkwoodii* — Burkwood Daphne  
*Daphne burkwoodii* 'Carol Mackie' — Carol Mackie Burkwood Daphne  
*Daphne odora* — Winter Daphne  
*Deutzia gracilis* 'Nikko' — Nikko Slender Deutzia  
*Deutzia x rosea* — Deutzia Hybrid  
*Elaeagnus pungens* 'Fruitlandii' — Silverberry  
*Enkianthus perulatus* — Enkianthus  
*Escallonia* 'Compacta' — Compact Escallonia  
*Escallonia* 'Newport Dwarf' — Newport Dwarf Escallonia  
*Euonymus alata* 'Compacta' — Dwarf Burning Bush  
*Euonymus japonica* 'Silver Princess' — Silver Princess Euonymus  
*Euonymus japonicus* 'Silver Queen' — Silver Queen Euonymus  
*Euonymus microphylla* — Box Leaf Euonymus  
*Exochorda macrantha* 'The Bride' — Pearl Bush  
*Fatsia japonica* — Japanese Aralia  
*Fothergilla gardenii* 'Jane Platt' — Dwarf Fothergilla  
*Fothergilla monticola* — Fothergilla  
*Hamamelis mollis* 'Coombe Wood' — Witch Hazel  
*Hamamelis mollis* 'Pallida' — Palida Witch Hazel  
*Hydrangea arborescens* 'Annabelle' — Annabelle Hydrangea  
*Hydrangea macrophylla* 'Nikko Blue' — Nikko Blue Hydrangea  
*Hydrangea macrophylla* 'Lemon Wave' — Lemon Wave Hydrangea  
*Hydrangea quercifolia* — Oak Leaf Hydrangea  
*Hydrangea serrata* 'Blue Billow' — Blue Billow Lacecap Hydrangea  
*Hydrangea seratta* 'Bluebird' — Blue & Pink Lacecap Hydrangea  
*Hypericum androsaemum* 'Albury's Purple' — Albury's Purple St. John's Wort



*Hypericum androsaemum* 'Hidcote' — Hidcote Shrub  
Hypericum  
*Hypericum* 'Rowallane' — Rowallane Shrub Hypericum  
*Ilex crenata* 'Compacta' — Compact Japanese Holly  
*Ilex crenata* 'Convexa' — Convex Leaf Japanese Holly  
*Ilex crenata* 'Green Island' — Green Island Japanese Holly  
*Ilex crenata* 'Helleri' — Helleri Japanese Holly  
*Ilex crenata* 'Hetzii' — Hetzii Japanese Holly  
*Itea virginica* 'Henry's Garnet' — Henry's Garnet  
Sweetspire  
*Itea virginica* 'Little Henry's' — Little Henry's Sweetspire  
*Jasminum nudiflorum* — Winter Jasmine  
*Juniperus chinensis* — Chinese Juniper  
*Kalmia latifolia* — Mountain Laurel  
*Kalmia latifolia* 'Elf' — Elf Mountain Laurel  
*Leucothoe fontanesiana* — Drooping Leucothoe  
*Ligustrum* 'Lodense' — Lodense Privet  
*Ligustrum* 'Suwanee River' — Suwanee River Privet  
*Lonicera nitida* — Box Honeysuckle  
*Lonicera nitida* 'Red Tip' — Red Tip Box Honeysuckle  
*Lonicera pileata* — Privet Honeysuckle  
*Loropetalum chinensis* 'Burgandy' — Chinese Loropetalum  
*Nandina domestica* 'Harbor Dwarf' — Harbor Dwarf  
Heavenly Bamboo  
*Osmanthus delavayi* — Delavay Osmanthus  
*Pernettya mucronata* — Gaultheria mucronata  
*Philadelphus coronarius* — Sweet Mock Orange  
*Philadelphus x virginialis* 'Dwarf Minnesota Snowflake'  
— Dwarf Minnesota Snowflake Mock Orange  
*Pieris* 'Forest Flame' — Forest Flame Pieris  
*Pieris fromosa* var *forestii* 'Wakehurst' — Wakehurst Pieris  
*Pieris japonica* 'Blush' — Blush Pieris  
*Pieris japonica* 'Spring Snow' — Spring Snow Pieris  
*Polystichum setiferum* — Alaska Fern  
*Potentilla fruticosa* 'Klondike' — Klondike Bush  
Cinquefoil  
*Potentilla fruticosa* 'Day Dawn' — Daydawn Bush  
Cinquefoil  
*Prunus laurocerasus* 'Otto Luyken' — Otto Luyken Laurel  
*Rhododendron species* — Rhododendron

*Rosa bonica* — Bonica Rose  
*Rosa* 'de L'Hay' — de L'Hay Rose  
*Rosa* 'Red Meidiland' — Red Meidiland Rose  
*Rosa rugosa* var. — Rugosa Rose varieties  
*Rosa* 'Scarlet Meidiland' — Scarlet Meidiland Rose  
*Rosa* 'Snow on Heather' — Snow on Heather Rose  
*Rosa* 'White Meidiland' — White Meidiland Rose  
*Rosmarinus officinalis* 'Tuscan Blue' — Tuscan Blue  
Rosemary  
*Salix purpurea* 'Nana' — Dwarf Purple Osier Willow  
*Salix repens argentea* — Silver Creeping Willow  
*Sambucus racemosa* 'Plumosa Aurea' — Golden  
Elderberry  
*Sarcococca hookerana* 'Humilis' — Sweet Box -  
Himalayan Sarcococca  
*Sarcococca ruscifolia* — Fragrant Sarcococca  
*Spiraea bumalda* 'Anthony Waterer' — Anthony Waterer  
Spirea  
*Spiraea japonica* 'Shirobana' — Shirobana Spirea  
*Spiraea nipponica* 'Snowmound' — Snowmound Japanese  
Spiraea  
*Spiraea prunifolia* 'Plena' — Bridal Wreath Spiraea  
*Spirea thunbergii* — Thunberg Spirea  
*Spiraea thunbergii* 'Compacta' — Compact Japanese Spirea  
*Spiraea x bumalda* 'Goldflame' — Goldflame Spiraea  
*Spiraea x vanhouttei* — Vanhoutte Spirea  
*Syringa microphylla* 'Superba' — Little Leaf Lilac  
*Taxus baccata* 'Repandens' — English Yew  
*Taxus x media* 'Hicksii' — Hicks Yew  
*Viburnum carlesii* 'Compactum' — Compact Korean Spice  
Viburnum  
*Viburnum carlesii* 'Nana' — Nana Korean Spice Viburnum  
*Viburnum davidii* — David Viburnum  
*Viburnum opulus* 'Compactum' — Compact European  
Cranberry Bush  
*Viburnum opulus* 'Nanum' — Dwarf European Cranberry  
Bush  
*Viburnum plicatum tomentosum* 'Mariesii' — Mariesii  
Doublefile Viburnum  
*Viburnum plicatum* var. *tomentosum* — Doublefile  
Viburnum

*Viburnum tinus* 'Spring Bouquet' — Spring Bouquet  
Laurustinus  
*Viburnum trilobum* — Cranberry Bush  
*Viburnum x bodnantense* — Bodnanse Viburnum  
*Viburnum x burkwoodii* — Burkwood Viburnum  
*Viburnum x rhytidophylloides* 'Alleghany' — Alleghany  
Viburnum  
*Weigela florida* var. — Variegated Weigela varieties

**GROUNDCOVERS, VINES, PERENNIALS,  
GRASSES, BULBS**

*Ajuga reptans* 'Catlin's Giant' — Catlin's Giant Carpet  
Bugle  
*Alchemilla mollis* — Lady's Mantle  
*Aubrieta deltoidea* 'Rockey's Purple' — Rocky's Purple  
False Rock-Cress  
*Bergenia* 'Silberlicht' — Heart Leaf Bergenia  
*Calamagrostis x acutiflora* 'Overdam' — Variegated  
Feather Reed Grass  
*Calamagrostis x acutiflora* 'Karl Foerster' — Foerster's  
Feather Reed Grass  
*Calluna vulgaris* — Scottish Heather  
*Carex buchananii* — Leather Leaf Sedge  
*Carex deweyana* — Dewey Sedge  
*Carex* 'Frosted Curis' — Frosted Curis Sedge  
*Carex morrowii* 'Variegata' — Variegated Japanese Sedge  
*Carex morrowii* 'Ice Dance' — Ice Dance Sedge  
*Carex morrowii* 'Evergold' — Evergold Sedge  
*Carex obnupta* — Slough Sedge  
*Carex pendula* — Weeping Sedge  
*Clematis florida* 'Alba Piena' — Alba Piena Clematis  
*Clematis viticella* 'Etoile Violette' — Etoile Violette  
Clematis  
*Cotoneaster dammeri* 'Canadian Creeper' — Canadian  
Creeper Cotoneaster  
*Crocus* — Crocus  
*Daboecia cantabrica* — Irish Heath  
*Deschampsia caespitosa* — Tufted Hair Grass  
*Erica species* — Heath  
*Euonymus x fortunei* var. — Wintercreeper varieties

*Euphorbia characias* ssp. *Wulfenii* — Wall Spurge  
*Euphorbia robbiae* — Robb's Spurge  
*Fragaria chiloensis* — Coast Strawberry  
*Gaultheria procumbens* — Wintergreen  
*Geranium x cantabrigiense* 'Biokovo' — True Geranium  
*Geranium x cantabrigiense* 'Cambridge Blue' —  
Cambridge Blue Geranium  
*Geranium dalmaticum* — Dalmatian Cranesbill  
*Geranium* 'Johnson's Blue' — Johnson's Blue Geranium  
*Geranium macrorrhizum* — Cranesbill Geranium  
*Hakonechloa macra* 'Areola' — Japanese Forest Grass  
*Helianthemum* 'Annabel' — Annabel Sun Rose  
*Helictotrichon sempervirens* — Blue Oat Grass  
*Helleborus orientalis* — Lenten Rose  
*Hemerocallis* 'Crazy Lace' — Crazy Lace Daylily  
*Hemerocallis* 'Catherine Woodbury' — Woodbury Daylily  
*Hemerocallis* 'Stella d'Oro' — Stella d'Oro Daylily  
*Hypericum calycinum* — Hypericum  
*Iberis sempervirens* 'Snowflake' — Snowflake Candytuft  
*Iris* — Iris  
*Juncus effuses* — Soft Rush  
*Juniperus conferta* 'Blue Pacific' — Blue Pacific Juniper  
*Juniperus conferta* 'Silver Mist' — Silver Mist Juniper  
*Lavandula angustifolia* var. — English Lavender varieties  
*Liriope* var. — Liriope varieties  
*Lithodora diffusa* 'Grace Ward' — Grace Ward Lithodora  
*Menthe corsica* — Corsican Mint  
*Miscanthus sinensis* 'Variegatus' — Variegated Japanese  
Silver Grass  
*Miscanthus sinensis* 'Yaku Jima' — Yaku Jima Japanese  
Silver Grass  
*Narcissus* — Daffodil  
*Pachysandra terminalis* — Pachysandra  
*Panicum virgatum* 'Haense Herms' — Red Switch Grass  
*Panicum virgatum* 'Rotestrahibusch' — Glowing Red  
Switch Grass  
*Parthenocissus quinquefolia* — Virginia Creeper



*Parthenocissus tricuspidata* — Boston Ivy  
*Pennisetum alopecuroides* — Fountain Grass  
*Pennisetum alopecuroides* 'Hameln' — Dwarf Fountain Grass  
*Pennisetum alopecuroides* 'Moudry' — Black Seeded Fountain Grass  
*Polystichum setiferum* — Alaska Fern  
*Rubus calycinoides* — Bramble  
*Santolina chamaecyparissus* — Lavender Cotton  
*Salvia officinalis* 'Alba Flora' — Alba Flora Sage  
*Salvia officinalis* 'Icterina' — Golden Variegated Sage  
*Stachys byzantina* 'Silver Carpet' — Silver Carpet Lambs Ear  
*Teucrium chamadrys* — Wall Germander  
*Thymus citriodorus* 'Aurea' — Gold Variegated Lemon Thyme  
*Tulipa* — Tulip  
*Vaccinium vitis-idaea* — Lingonberry  
*Vinca minor* — Periwinkle

**NATIVE PLANTS**

**TREES**

*Abies grandis* — Grand Fir  
*Acer circinatum* — Vine Maple  
*Acer macrophyllum* — Bigleaf Maple  
*Alnus rubra* — Red Alder  
*Amelanchier alnifolia* — Western Serviceberry  
*Cornus nuttallii* — Pacific Dogwood  
*Corylus cornuta* — Western Hazelnut  
*Crataegus douglasii* — Douglas Hawthorne  
*Fraxinus latifolia* — Oregon Ash  
*Pinus ponderosa* — Ponderosa Pine  
*Pseudotsuga menziesii* — Douglas Fir  
*Querrus garryana* — Oregon Oak  
*Sambucus racemosa* — Red Elderberry  
*Sequoiadendron giganteum* — Giant Sequoia  
*Thuja plicata* — Western Red Cedar  
*Tsuga heterophylla* — Western Hemlock

**SHRUBS**

*Berberis nervosa* — Cascade Oregon Grape  
*Cornus stolonifera* — Red Osier Dogwood  
*Gaultheria shallon* — Salal  
*Holodiscus discolor* — Ocean Spray  
*Lonicera involucrata* — Black Twinberry  
*Mahonia aquifolium* — Oregon Grape  
*Mahonia aquifolium* 'Compacta' — Compact Oregon Grape  
*Mahonia repens* — Creeping Mahonia  
*Oemlaria cerasiformus* — Indian Plum  
*Philadelphus lewisii* — Mock Orange  
*Physocarpus capitus* — Pacific Ninebark  
*Rhododendron macrophyllum* — Pacific Rhododendron  
*Ribes sanguineum* — Red Flowering Currant  
*Rosa nutkana* — Nootka Rose  
*Spiraea douglasii* — Douglas Spirea  
*Symphoricarpus albus* — Common Strawberry  
*Taxus brevifolia* — Pacific Yew  
*Vaccinium ovatum* — Evergreen Huckleberry

**GROUNDCOVER, FERNS, HERBS**

*Anenome oregona* — Oregon Windflower  
*Aquilegia formosa* — Red Columbine  
*Arctostaphylos uva-ursi* 'Vancouver Jade' — Vancouver Jade Kinnickinnick  
*Arctostaphylos uva-ursi* 'Emerald Carpet' — Kinnickinnick  
*Blechnum spicant* — Deer Fern  
*Calypso bulbosa* — Fairyslippers  
*Camassia quamash* — Camas  
*Claytonia lanceolata* — Western Spring Beauty  
*Corydalis scouleri* — Western Corydalis  
*Cornus canadensis* — Bunchberry  
*Delphinium bicolor* — Montana Larkspur  
*Dicentra formosa* — Wild Bleeding Heart  
*Dodecatheon pulchellum* — Shooting Star  
*Eriophyllum lanatum* — Oregon Sunshine  
*Erythronium oregonum* — Fawn Lily  
*Fragaria virginia* var. *platypetala* — Broad Petal Strawberry

*Fritillaria lanceolata* — Checker Lily  
*Helianthus annuus* — Common Sunflower  
*Iris tenax* — Oregon Iris  
*Linnaea borealis* — Twin Flower  
*Lupinus sulphureus* — Sulphur Lupine  
*Mimulus species* — Monkey Flower  
*Oxalis oregona* — Redwood Sorrel  
*Polystichum munitum* — Western Swordfern  
*Pteridium aquilinum* — Bracken Fern  
*Rhus spectabilis* — Salmonberry  
*Rubus parviflorus* — Thimbleberry  
*Smilacina racemosa* — False Solomon Seal  
*Tellima grandiflora* — Fringecup  
*Thalictrum occidentale* — Western Meadowrue  
*Tiarella trifoliata* — Foam Flower  
*Trillium ovatum* — Western Trillium  
*Vancouveria hexandra* — Inside Out Flower  
*Viola glabella* — Stream Violet

**BIOSWALE PLANTINGS**

**POND MARSH / SWALE BOTTOM PLANT COMMUNITY**

**GROUNDLAYER**

*Alisma plantago-aquatica* — Water Plantain  
*Beckmannia syzigachne* — American Sloughgrass  
*Bromus carinatus* — California Bromegrass  
*Camassia quamash* — Common Camas  
*Carex obnupta* — Slough Sedge  
*Deschampsia caespitosa* — Tufted Hairgrass  
*Eleocharis ovata* — Ovate Spike Rush  
*Eleocharis palustris* — Common Spike Rush  
*Elymus glaucus* — Blue Wildrye  
*Festuca rubra* v. *rubra* — Native Red Fescue  
*Iris tenax* — Oregon Iris  
*Juncus effusus* — Soft Rush  
*Juncus ensifolius* — Dagger Leaf Rush  
*Lysichitum americanum* — Skunk Cabbage  
*Regreen* — Wheat Cover Crop  
*Sagittaria latifolia* — Wapato Duck Potato

*Scirpus acutus* — Hardstem Bulrush  
*Scirpus microcarpus* — Small Fruited Bullrush

**UNDERSTORY**

*Spiraea douglasii* — Douglas Spirea

**SHRUB / PLANT COMMUNITY GROUNDLAYER**

*Deschampsia caespitosa* — Tufted Hairgrass  
*Festuca rubra* v. *rubra* — Native Red Fescue

**UNDERSTORY**

*Cornus stolonifera* — Redtwig Dogwood  
*Rosa nutkana* — Nootka Rose  
*Salix lasiandra* — Pacific Willow  
*Salix piperi* — Piper Willow  
*Salix scouleriana* — Scouler's Willow  
*Salix sitchensis* — Sitka Willow  
*Spiraea douglasii* — Douglas Spirea

**PROHIBITED PLANT SPECIES**

*Cirsium arvense* — Canadian Thistle  
*Convolvulus spp* — Morning Glory  
*Cytisus scoparius* — Scotch Broom  
*Dipsacus sylvestris* — Common Teasel  
*Festuca arundinaceae* — Tall Fescue  
*Hedera helix* — English Ivy  
*Holcus canatus* — Velvet Grass  
*Lolium spp.* — Rye Grasses  
*Lotus corniculatus* — Bird's Foot Trefoil  
*Lythrium salicaria* — Purple Loose Strife  
*Melilotus spp.* — Sweet Clover  
*Myriophyllum spicatum* — Eurasian Milfoil  
*Phalaris arundinaceae* — Reed Canary Grass  
*Rubus discolor* — Himalayan Blackberry  
*Solanum spp.* — Nightshade  
*Trifolium spp.* — Clovers