



WILSONVILLE
OREGON

INTEGRATED PEST MANAGEMENT

Review of 2025 Activities



Photo by Marcus Schwing

INTEGRATED PEST MANAGEMENT (IPM)

The City of Wilsonville recognizes the importance of sound environmental stewardship. The City is committed to optimizing management practices that protect people and the environment, including public facilities, parks, and infrastructure maintained by City staff.

Pests can be a troublesome and persistent problem. Choosing the appropriate response requires careful planning and treatment to ensure successful results. Whether the target pest is a plant, insect, or animal, the City's response considers public safety, environmental health, and available resources in response planning.



Integrated Pest Management (IPM), at its core, is a decision making process. IPM offers a broad-based approach that relies on commonsense practices that reduce the risk associated with pest response and treatment. An IPM Plan identifies management areas, key pests of concern, and outlines a treatment strategy mindful of pest biology and available resources.

IPM PROGRAM GOALS

The goals for selecting treatment principles and developing pest management strategies include:



Preservation of natural resources, including pollinator and wildlife habitat.



Ensure cost-effectiveness in the short and long term.



Evaluate the efficacy of treatment strategies and the Integrated Pest Management program overall.



Emphasize practices to minimize risk to human health.

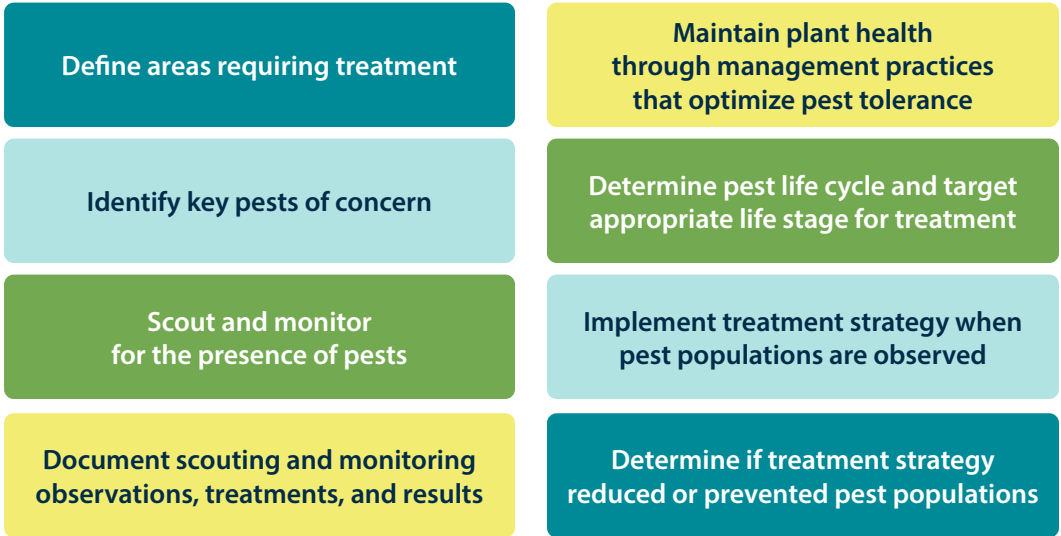


Reduce chemical pest control treatments when possible.

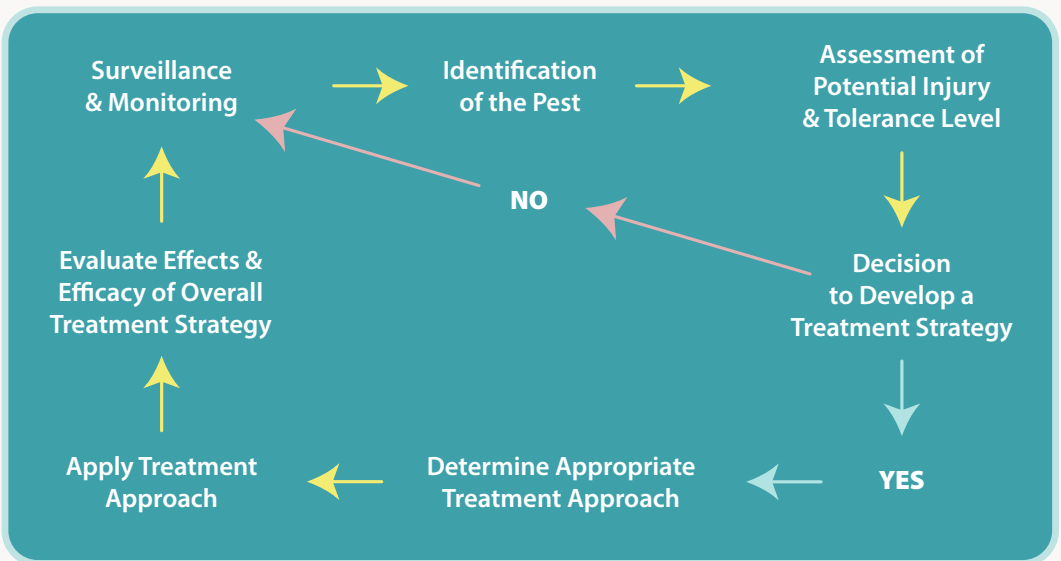
IDENTIFYING PESTS & DEVELOPING A PLAN

Many of the most common pests are familiar to the public. They include gophers, rats, yellow jackets, cockroaches, and plants, such as poison oak and Himalayan blackberry.

Treating pests that pose a health risk is imperative, particularly in areas where human activity is high. The City's IPM Plan relies on the following steps in addressing pests of concern:



DECISION MARKING FLOW: HOW AN IPM PLAN IS IMPLEMENTED



FOUR APPROACHES TO PEST MANAGEMENT

There are four categories of practices used by the City of Wilsonville to control pests. Cultural, mechanical, and biological practices are prioritized over the use of chemical treatments.

1

Cultural practices are proven agronomic and horticultural practices that optimize plant health, suppress non-beneficial insects, disease and inhibit weed growth.

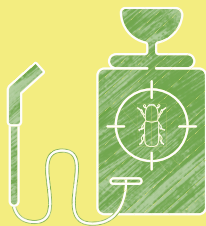


2

Mechanical practices use a variety of tools and equipment to eliminate pests, suppress their reproductive capacity or block them out.

3

Biological practices use living control agents to act as predators or parasites of pest species. This approach also utilizes other beneficial organisms that improve plant health by enhancing soil quality.



4

With IPM, **chemical practices** are considered a last resort when cultural, mechanical, and biological options are not effective. A treatment strategy that utilizes a chemical approach accounts for the greatest level of protection for the people and the environment.





EARLY DETECTION & RAPID RESPONSE

Not all pests are invasive but those that are can quickly become a difficult issue for crews to manage. If left unchecked, invasive species can rapidly expand their range resulting in control efforts that are expensive, ineffective, or both.

The City employs the principle of Early Detection and Rapid Response (EDRR) to stay ahead of pests by ensuring any new invasive establishments are rapidly identified and appropriate early control measures are implemented.



MEDITERRANEAN OAK BORER

In response to the emergent threat posed by the Mediterranean Oak Borer (MOB), the City has collaborated with key stakeholders such as the Oregon Department of Agriculture, the Oregon Department of Forestry, Metro, and leading arborists, to develop and implement treatments strategies to mitigate the impact of a local MOB infestation.

With an IPM plan focused on safeguarding the existing city treescape and increasing future resiliency, arborists have administered insecticides and fungicides to publicly-owned Oregon white oak trees. Regarding privately owned oaks, City staff have engaged with homeowners associations and private landowners to increase awareness of and extend protection efforts to trees on private property.





CULTURAL & MECHANICAL TREATMENT IN ACTION

The City of Wilsonville's staff continues to implement new and innovative ways to manage invasive species.



VOLUNTEERS

The Wilsonville Parks and Recreation Department has partnered with many dedicated volunteers over the years. They help manage over 250 acres of natural spaces. Volunteers have installed native plants, pulled English ivy, removed Himalayan blackberry and controlled many other invasive pests.

FLAIL MOWERS

With the purchase of a new flail mower attachment for the City's excavator, City maintenance crews are now able to effectively remove invasive blackberry, clear roadside shoulders, and remove various invasive species throughout Wilsonville.

The excavator's long reach now makes it possible to mechanically treat areas of invasive and weedy plant species that were previously untouched.

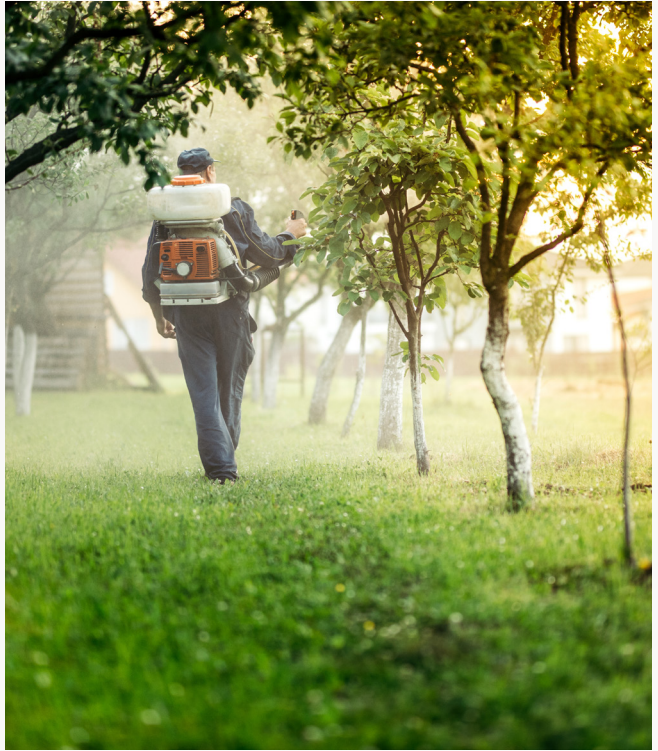


CHEMICAL METHODS: WHEN OTHER TREATMENTS STRATEGIES FAIL

Reducing chemical use is an important objective of the City’s IPM plan. Chemical controls are only used if other practices are not fully effective or too costly to implement. Any chemicals used are applied in a selective manner that reduces risk to humans and the environment.

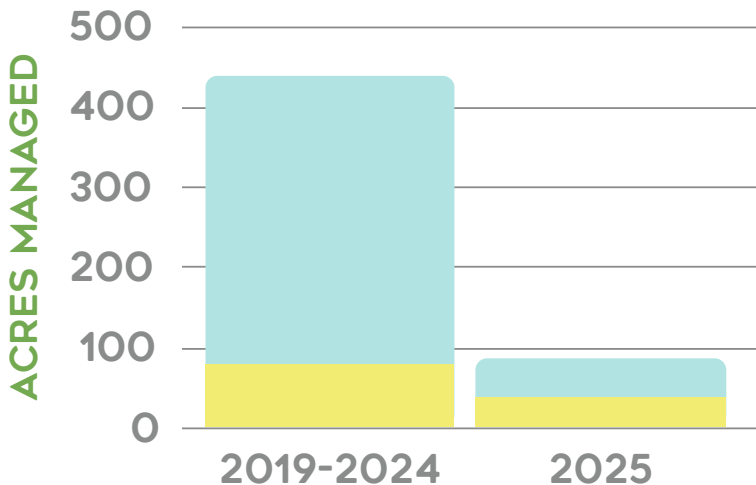
The City monitors which practices it uses to control pests, including the acreage treated.

In 2025, City staff implemented a new system for tracking land management, which more accurately reflects the acres managed with pest control practices.



PEST CONTROL PRACTICES

● Chemical Controls ● Cultural or Mechanical Controls



PESTICIDES ALLOW US MORE TIME!

MORE TIME EQUALS BETTER HABITAT FOR POLLINATORS!

Over the past three growing seasons, Facilities staff have been trying to approach landscaping in a slightly different way, specifically with the application of pesticides. With the implementation of proper timing and tightening of action thresholds for pesticide application, we have been able to allocate more labor hours towards planting projects. Our data show that our planting hours in 2025 have already surpassed those of the previous two years.

Facilities have incorporated more Willamette Valley native species' in landscaping activities, approximately 30% of the perennials planted this year are from our bioregion. To name just a few that hold a special place in the hearts of our native pollinators, we planted *Sidalcea virgata*, more commonly known as rose checkermallow. This plant serves as an important host for several native butterflies in the Pacific Northwest. One of our favorites that we planted is Oregon sunshine, which is a very hardy, drought-tolerant perennial. Due to the proper use of pesticides and following IPM practices over the past three growing seasons, Facilities has had the time to achieve simple planting projects with significant pesticide reduction implications.

- FACILITIES GROUNDS TEAM

FOR MORE INFORMATION

The development of the City's Integrated Pest Management program is a collaboration among Public Works, Natural Resources and Parks Maintenance staff.

This report, and additional information about the City's Integrated Pest Management, is available at wilsonvilleoregon.gov/naturalresources

To receive a copy of this report by mail, call (503) 682-4960.

DIRECTORY

City of Wilsonville Customer Service	(503) 682-1011
Natural Resources	(503) 570-1570
Parks & Recreation	(503) 783-7529
Public Works	(503) 682-4092
City of Wilsonville Website	wilsonvilleoregon.gov



Photo by Dave Garoutte



