

From The Director's Office:

A New Regulatory Permit. In late September, the Oregon Department of Environmental Quality (DEQ) notified the City of a new requirement to submit a 1200-Z industrial stormwater permit application along with supporting documentation for the Wastewater Treatment Plant (WWTP) site. During DEQ's review of the city's National Pollutant Discharge Elimination System (NDPES) wastewater permit, it was determined that the plant has stormwater sheetflow discharges that are not directed to the headworks process and potentially discharges offsite.

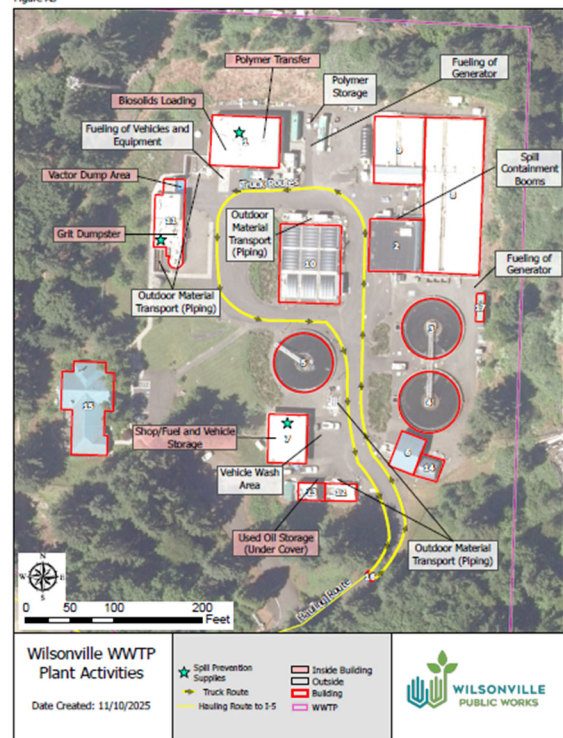
A 1200-Z permit regulates stormwater discharges from industrial facilities into Oregon's waterways, ensuring that pollutants do not harm surface water. The permit requires the development and implementation of a Stormwater Pollution Control Plan (SWPCP) to manage any unrealized stormwater pollution by identifying drainage patterns, industrial activities, potential pollution sources, and the site and structural controls in place to mitigate the flow of pollutants.

As a permit holder the City will be required to monitor and sample stormwater discharges to check for pollutant levels, and submit reports to DEQ to document its compliance with the permit's requirements.

To ensure proper implementation of permit requirements, WWTP employees will complete training to learn the Overflow Notification and Response Plan contents and procedures which includes: type of spills that are reportable; how to properly report wastewater, potable water, and biosolids spills; what are classified as special considerations; reporting requirements for chemical and oil spills; and how and when to convert between gallons and pounds for reporting. Additionally, WWTP staff will receive annual training covering the SWPCP contents and requirements, as well as other stormwater management related topics including illicit discharge detection.



Figure A3



Best Regards,

Delora Kerber, Public Works Director

Facilities

Winter Weather? We're Ready!

Facilities Maintenance Specialists Robert Todd and Luke McKinnon represented the team at the Public Works and Roads departments' annual Winter Weather Training. The team presented best practices for chainsaw maintenance, safety, and cutting techniques.

Robert instructed crews on the proper equipment maintenance and correct chain and bar selection for using a chainsaw to clear debris.



Luke's live demonstration followed, teaching proper cutting techniques. Luke focused much of this training on proper under cutting of a downed tree, and how to properly use falling wedges in order to prevent the chainsaw bar getting pinched and stuck in the log.

This annual training ensures crews skills and safety measures are top of mind when winter weather strikes.



Facilities

Fully Staffed

Welcome Trey Coble as the newest member of the Facilities Janitorial team. Trey came to us from Oregon State Parks where he worked as a seasonal employee for the last five years, mostly in central Oregon's Cottonwood Canyon State Park. Trey's duties with State Parks included cleaning the rental cabins, scrubbing and disinfecting the campground restrooms, minor building maintenance repairs, and taking care of the campground landscapes.

During his off-season from working for State Parks, Trey was employed one year with the City of Wilsonville as a Facilities Grounds seasonal worker, and again the following year as a Roads Department seasonal worker.

After a very competitive selection process, Trey was recently selected as the fourth fulltime janitor for the City. Please congratulate Trey on his full-time employment with the City, we are glad to have him onboard!



Facilities

The Dirty Work

The Facilities Janitorial crew is truly the front line of City staff. They arrive at 5:00 am before anyone else, they deal with the issues that most of us run from, and as they are doing their job well, no one realizes they were there.

Their jobs are extremely repetitive - making it hard to present an exciting story on the great job they are doing. Most of the before and after photos they submit for the managers' report are too frightening to be included. When the team is shorthanded and can't fully respond to each building, it is noticed, and the value of their work is evident and missed.



So, hats off to the ones doing the dirty work, and be sure to thank a janitor the next time you see them. Included are just a few 'before' photos of what they deal with on a *good* day.



Facilities

Unbe-leaf-able Improvement

The Facilities Landscape Maintenance team worked with a metal fabrication shop to mount a leaf vacuum to one of the swap loader debris boxes. Previously, three departments were sharing one trailer-mounted pull behind leaf vacuum, making it difficult to remove leaves in a timely manner. Additionally, backing up the old trailer-mounted leaf vacuum trailer behind a large truck with a debris box is very difficult and time consuming. Instead of purchasing another pull behind unit, the Facilities department chose to purchase a vacuum on a skid, and mount the unit directly to the debris box. This makes the team much more nimble in the tight parking lots and the bed can be dumped without the unit being removed or unhooked.



Roads

Leaf No Trace

Early cold weather led to a concentrated leaf fall this year, bringing down most of the leaves around the same time. The Roads team once again rose to the challenge, with all crew members working on a unified effort to remove the fallen leaves originating from medians and City-owned properties.

Every year brings the opportunity to remind residents and landscapers alike to manage their leaves according to City code, which prohibits blowing them into the roadway. To aid with this seasonal onslaught of leaves, the Roads team in conjunction with Wilsonville Community Sharing assist residents with leaf disposal at the annual Leaf Drop Day. This year around 50 yards of leaves were collected at this donation-based event.



Roads

Lookin' Grate!

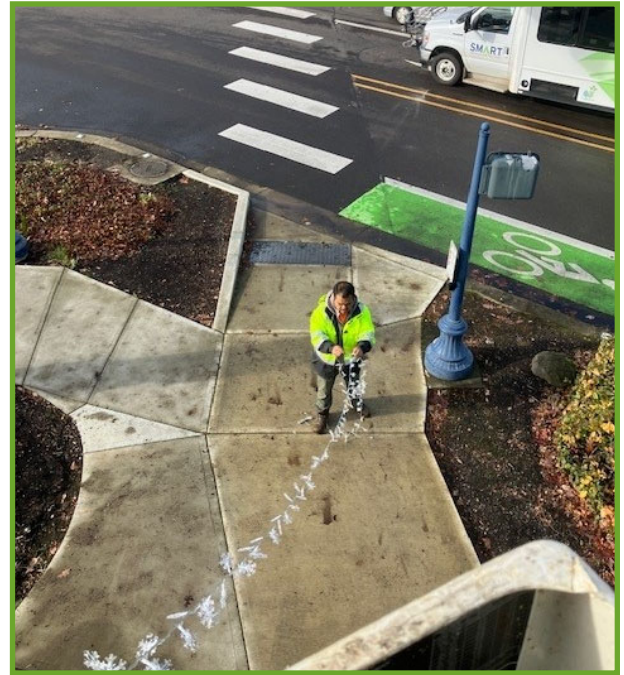
Keeping sidewalks and roads in safe working order requires a varied set of ongoing tasks. Below, Roads crew member Salvador Favela is removing tree roots that can cause sidewalk lifting and potential tripping hazards to pedestrians. Salvador is also shown working in the Public Works sign shop to repair and replace object markers that serve to warn sometimes distracted drivers of potential dangers on Wilsonville roads.



Roads

Lights of the Season

The Roads team keep Wilsonville festive and bright as we head into the darkest days of the year. These winter lights and decorations are meant to spread cheer and holiday spirit to anyone visiting or living in Wilsonville this winter. All that's missing is the hot cocoa!



Stormwater

Water, Water Everywhere

The Stormwater team welcomed its newest full time member Elijah Hermann in November. Elijah had been working as a seasonal Stormwater employee and was selected for the full time position, allowing he and teammate Jay Herber to continue their momentum on projects such as clearing the City's inlets and outfalls to prevent flooding as the rainy weather arrives. Coupled with a large leaf drop in November, Elijah and Jay had plenty of work on their hands!



Continuing Education

Utilities

Group Project

Responding to winter roads-related concerns is not a primary focus for the Utilities team, but preparation, training and knowledgeable response procedures *are* a focus for all Public Works employees. The Utilities team joined the annual Winter Readiness Training event as part of the support staff who may be called upon during winter weather events. Each week, one member of the Utilities crew is on-call for after hours emergencies, alongside their counterpart from the Roads, Parks or Stormwater division. Oftentimes these on-call responders work as a team to quickly resolve issues that arise outside of normal business hours. In the event of a severe weather response, these teams will work any shift necessary to keep Wilsonville moving safely.

